

REV.	DESCRIPTION	DATE	REVISED BY	ECO #
A	INITIAL RELEASE	10/7/2008	SDP	-
B	ITEM 18 WAS 20008293 QTY=1. ITEM 17 WAS 2340482 QTY=3. ITEM 18 WAS 2316186 QTY=3. ITEM 19 WAS 2800793 QTY=1.	2/21/2013	SDP	R4681
C	UPDATED DRAWING TO CURRENT BORDER & TITLE BLOCK	8/19/2013	KDD	R5337
D	ITEM 24 WAS 30229035 QTY=1.	6/23/2015	SDP	R8003
E	ADDED ITEMS 28 FOR MOTOR CORD AND CONTROL CORD	6/1/2018	KRL	045623

**GENERAL DESCRIPTION:**

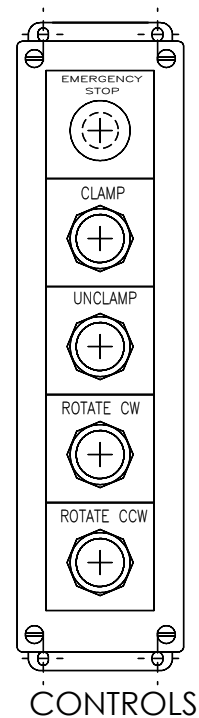
MODEL: SR44-84  
 CAPACITY: 4,400 LBS. UNIFORM LOAD  
 MAXIMUM CLAMP OPENING: 85 1/4"  
 MINIMUM CLAMP OPENING: 53 1/4"  
 MAXIMUM LOAD SIZE: 48 WIDE x 48 DEEP x 84 HIGH  
 CLAMP TIME: 11 SECONDS FULL STROKE APPROX  
 UNCLAMP TIME: 15 SECONDS FULL STROKE APPROX  
 ROTATE TIME: 18 SECONDS APPROX. FOR 180 DEGREES. ROTATION CW  
 ROTATE TIME: 15 SECONDS APPROX. FOR 180 DEGREES ROTATION CCW  
 POWER: 460/3/60 3.2 HP INTERNAL  
 CONTROLS: 115/1/60  
 FIVE (5) BUTTON PUSHBUTTON STANCHION PRE-WIRED TO MACHINE W/ THE FOLLOWING MOMENTARY-ACTION OPERATORS:  
 • "CLAMP" PUSHBUTTON  
 • "UNCLAMP" PUSHBUTTON  
 • "ROTATE CW" PUSHBUTTON  
 • "ROTATE CCW" PUSHBUTTON  
 • "E-STOP" PUSHBUTTON  
 FINISH: TWO (2) COATS SOUTHWORTH BEIGE MACHINERY ENAMEL  
 BEVEL TOEGUARDS & GUARD RAILS SAFETY YELLOW

**APPLICATION INFORMATION:**

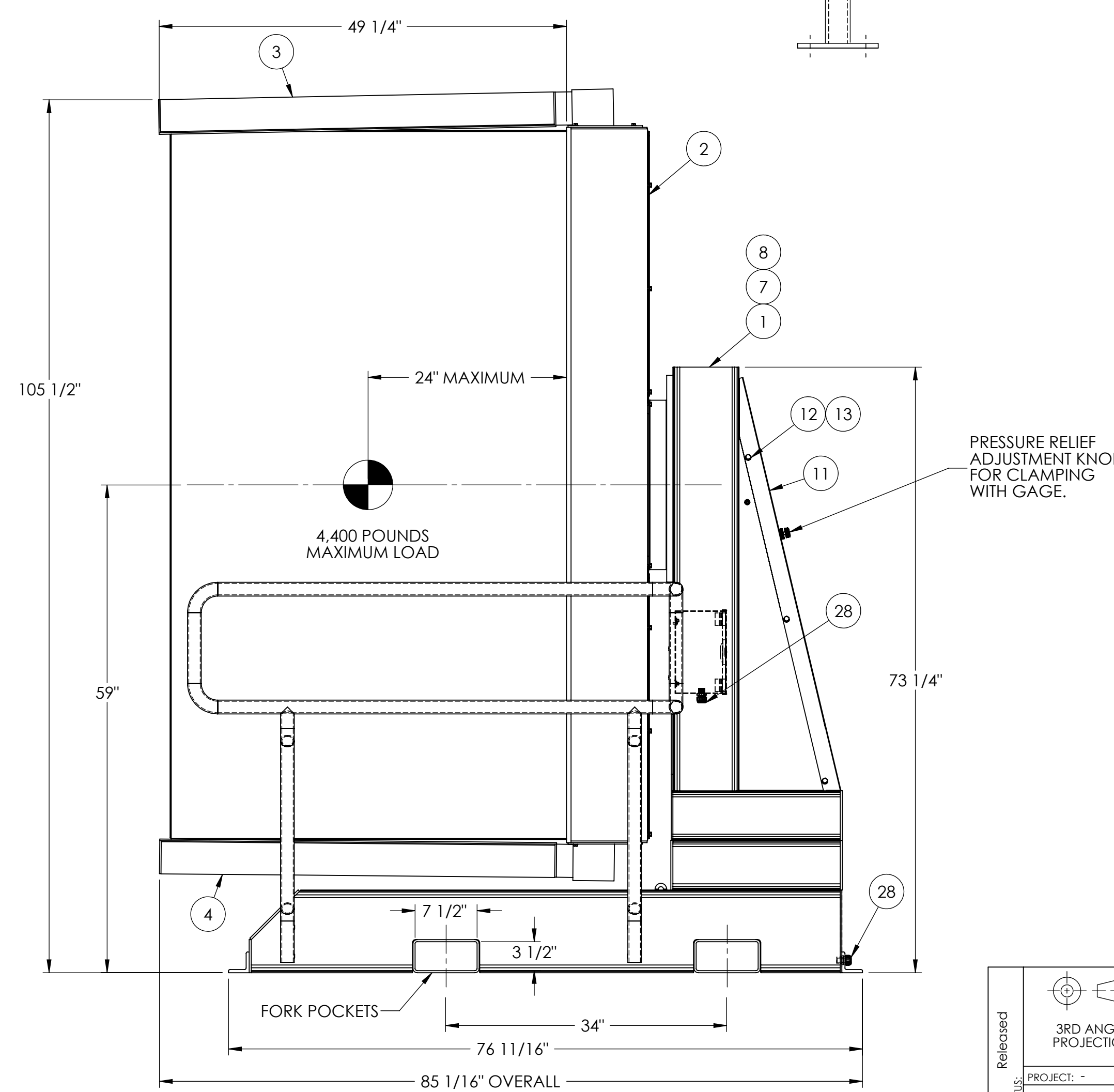
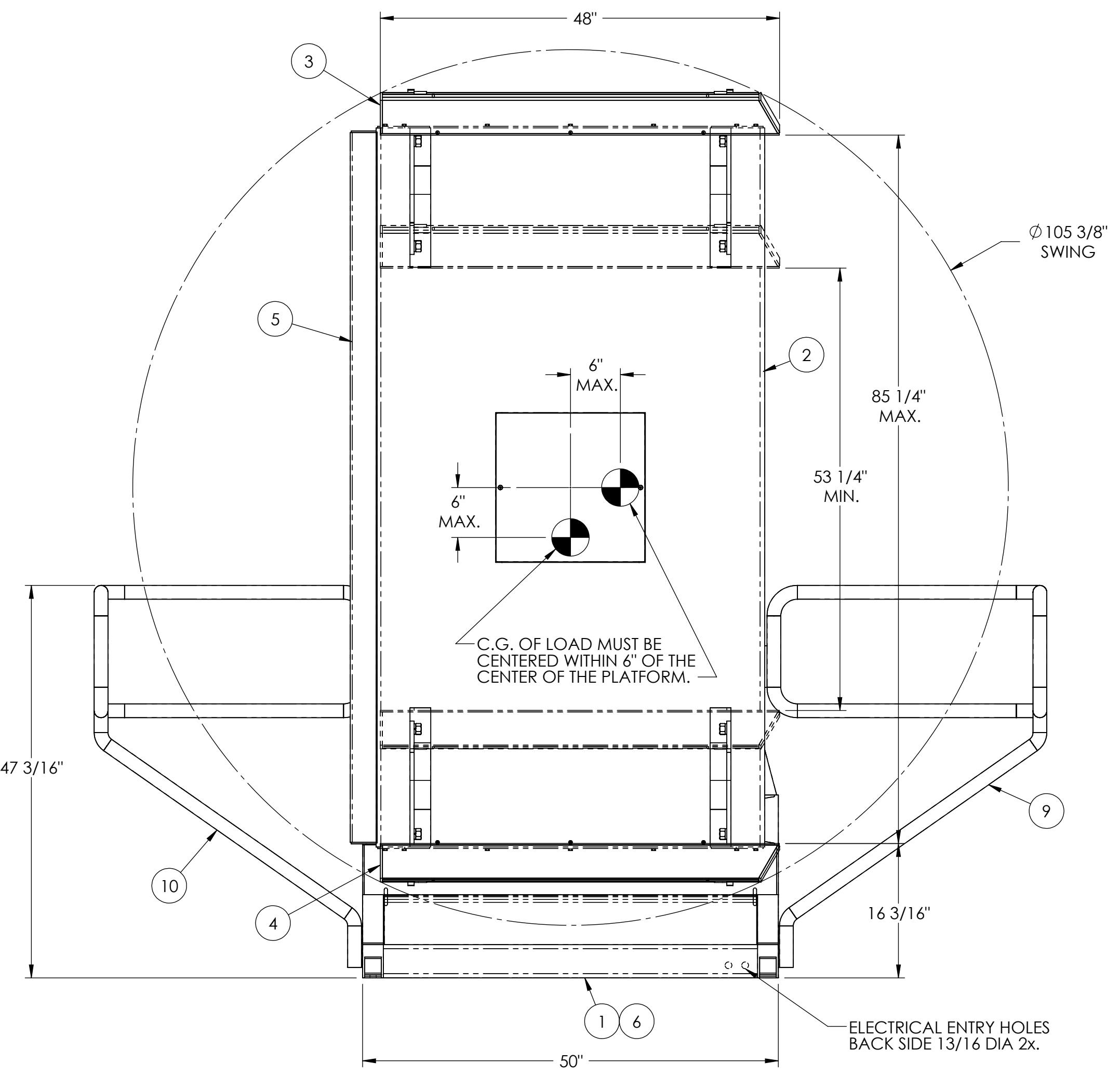
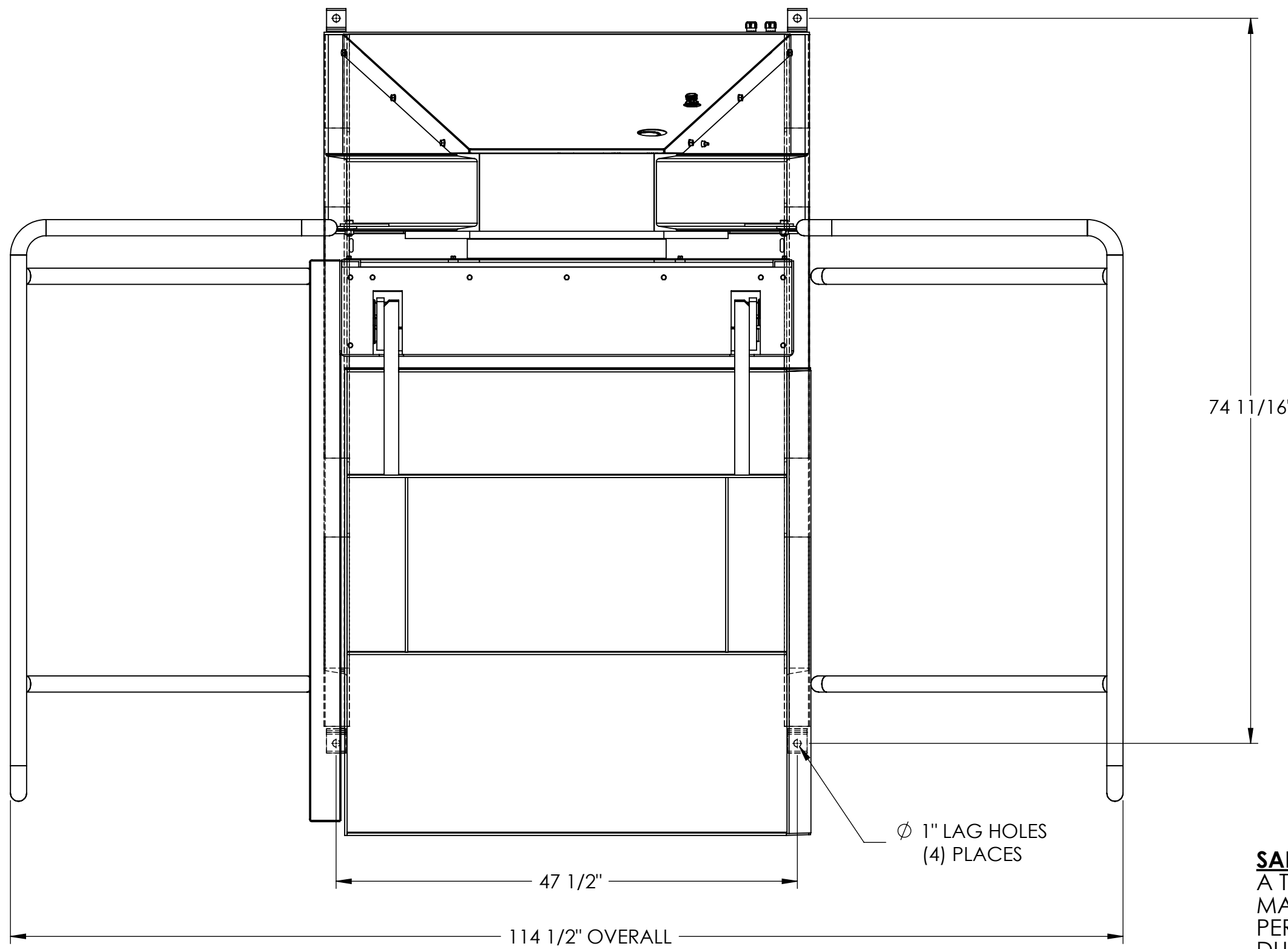
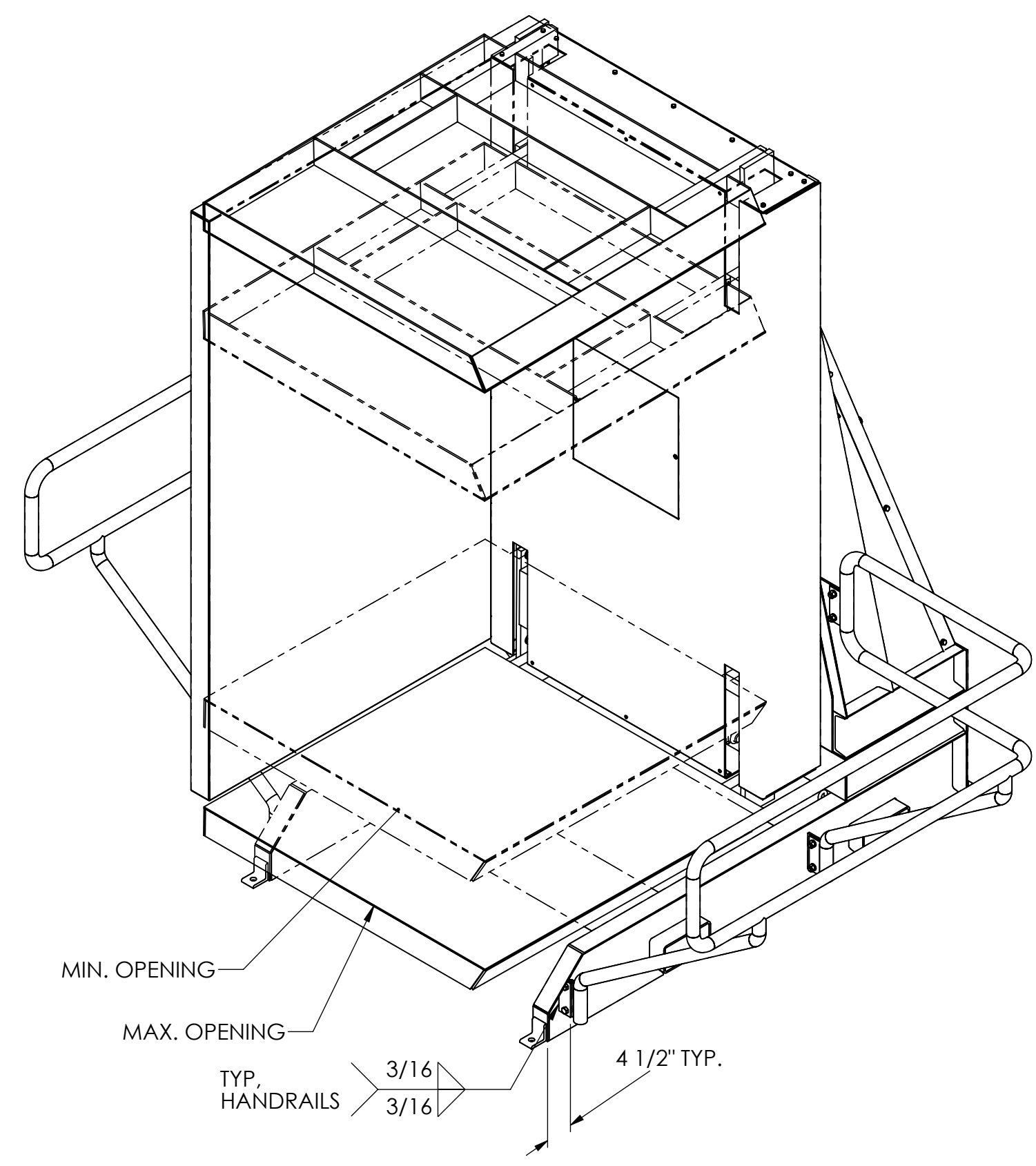
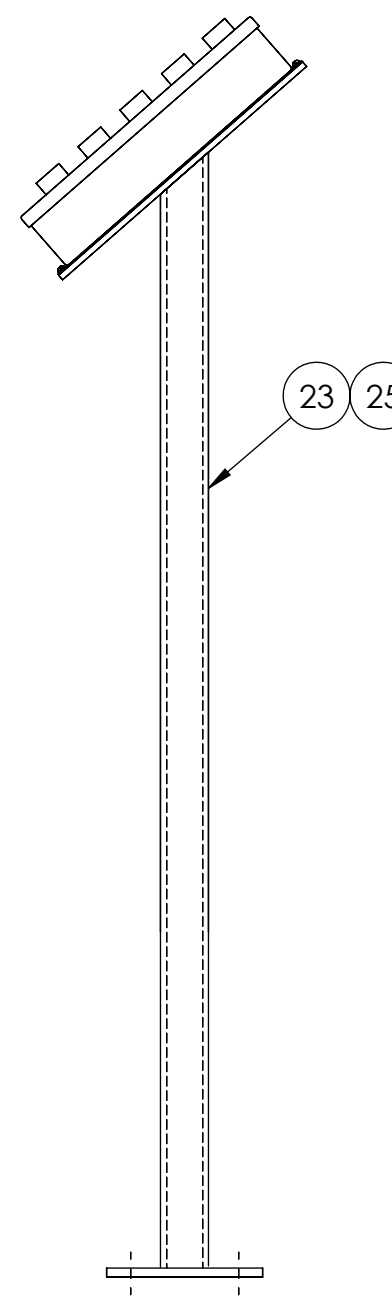
CUSTOMER HAS A 40 X 48 X 60-72 HIGH PALLET OF FROZEN FOOD THAT THEY WANT TO ROTATE.

**SAFETY NOTE:**

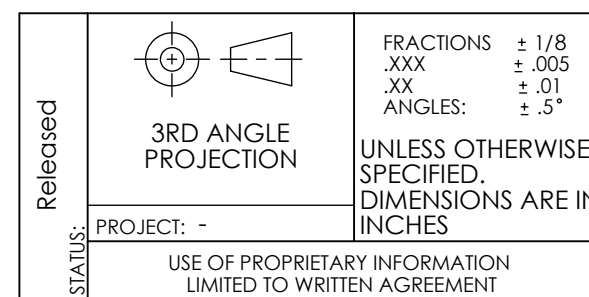
A THREE-SIDED ENCLOSURE AROUND THE MACHINE IS RECOMMENDED TO PROHIBIT PERSONNEL CONTACT WITH THE MACHINE DURING OPERATION.



CONTROLS



ITEM NO.	QTY.	U/M	DESCRIPTION	PART NO.
28	4	EA	EL FTG STRN RLF THOBET 2524 OR EQUAL	2111197
27	1	EA	HY GRS MANF E SR44 1PTS	60029497
26	1	EA	LD LOC DIAG SR-44	60023876
25	15	FT	BK-EL CABLE 16-7 SO	1110100
24				
23	1	EA	EL PB STAN MT N12	60022069
22		REF	HY PLUMBING SCHEMATIC	60022056
21		REF	EL WIRING DIAG 208/230/460 AC XFMR	60022055
20	2	EA	EL FUSE BUSS FNQ-R-1	2166114
19	1	EA	EL OLRE SPRSCH CT7N-23-B48	10055160
18	4	EA	HA SCREW RHSL STL .25-20X.37 FULL	2316222
17	4	EA	BK-HA WSHR LCK-SPT STL .25	2340484
16	1	EA	EL CTRL PANEL 230/460 115AC N1	60043071
15	4.5	FT	HA CHAIN MCMCAR 3588T16 .37	10009780
14	1	EA	SA ROTATION STOP SR44-60 KIT	D 60028702
13	6	EA	BK-HA SCREW HHCS STL .37-16X.50 FULL	2316009
12	6	EA	BK-HA WSHR LCK-SPT STL .37	2340486
11	1	EA	MMP SHT HRS 16GA 46.18X51.37 COVER	10036560
10	1	EA	SA GUARD LH ASSY	60027439
9	1	EA	SA GUARD RH ASSY	60027436
8	1	EA	HY ARR E SR-44 50W	D 60028788
7	1	EA	HY ARR E SR44-72/84	60026245
6	1	EA	HY PU E 3.2HP 1.7GPM 2.4UGAL	60021875
5	1	EA	SA SIDE TABLE 46.62 X 86.87 WM	60027427
4	1	EA	SA TABLE & CARRIAGE WELDMENT SR44 WM	60023420
3	1	EA	SA TABLE & CARRIAGE WELDMENT SR44 WM	60023421
2	1	EA	SA ROTATION TABLE COVER ASSY	60027424
1	1	EA	BA SR44-84 50.00 X 76.68	60029542



**SOUTHWORTH PRODUCTS CORP.**  
 P.O. Box 1380 Portland Maine 04104-1380  
 SCALE: 1:12  
 DATE: 09/19/08  
 DWG. NO.: 4433477  
 SHEET 1 OF 2

THIS DRAWING MUST BE AT REVISION: 'E'

8

7

6

5

4

3

2

DWG NO. 4433477

SHEET 2 OF 2

D

C

B

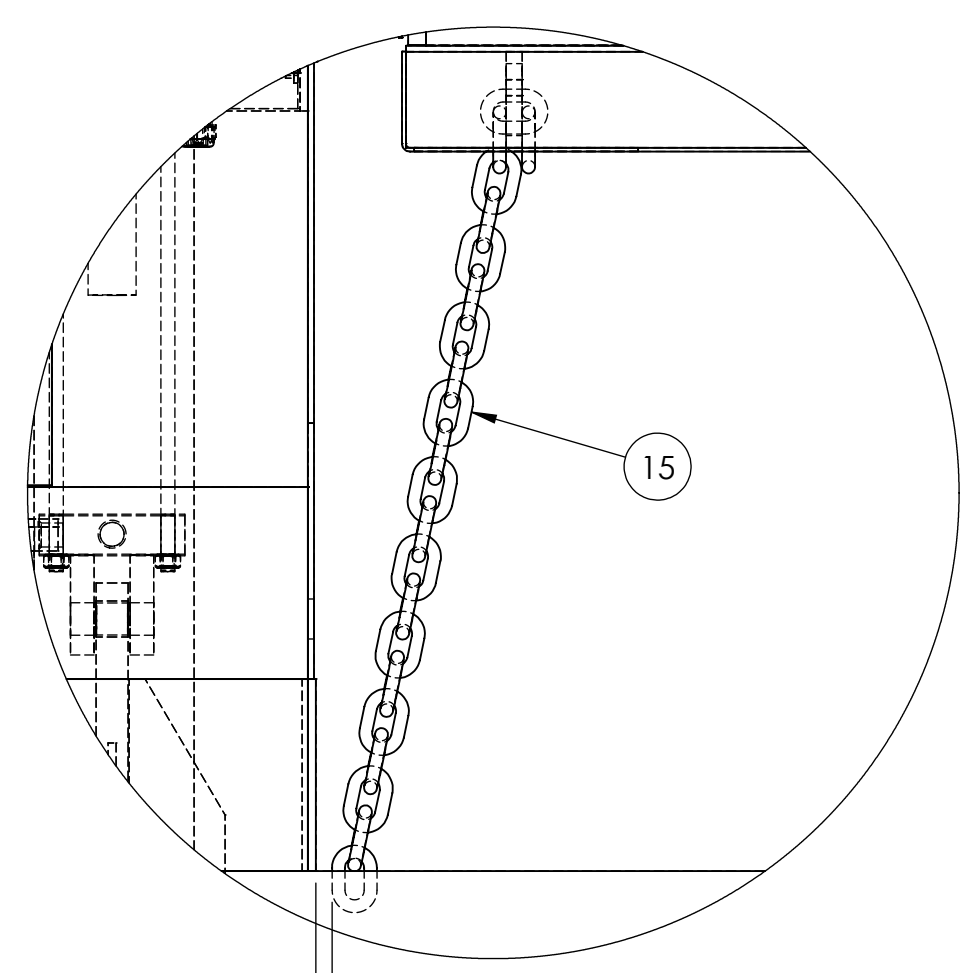
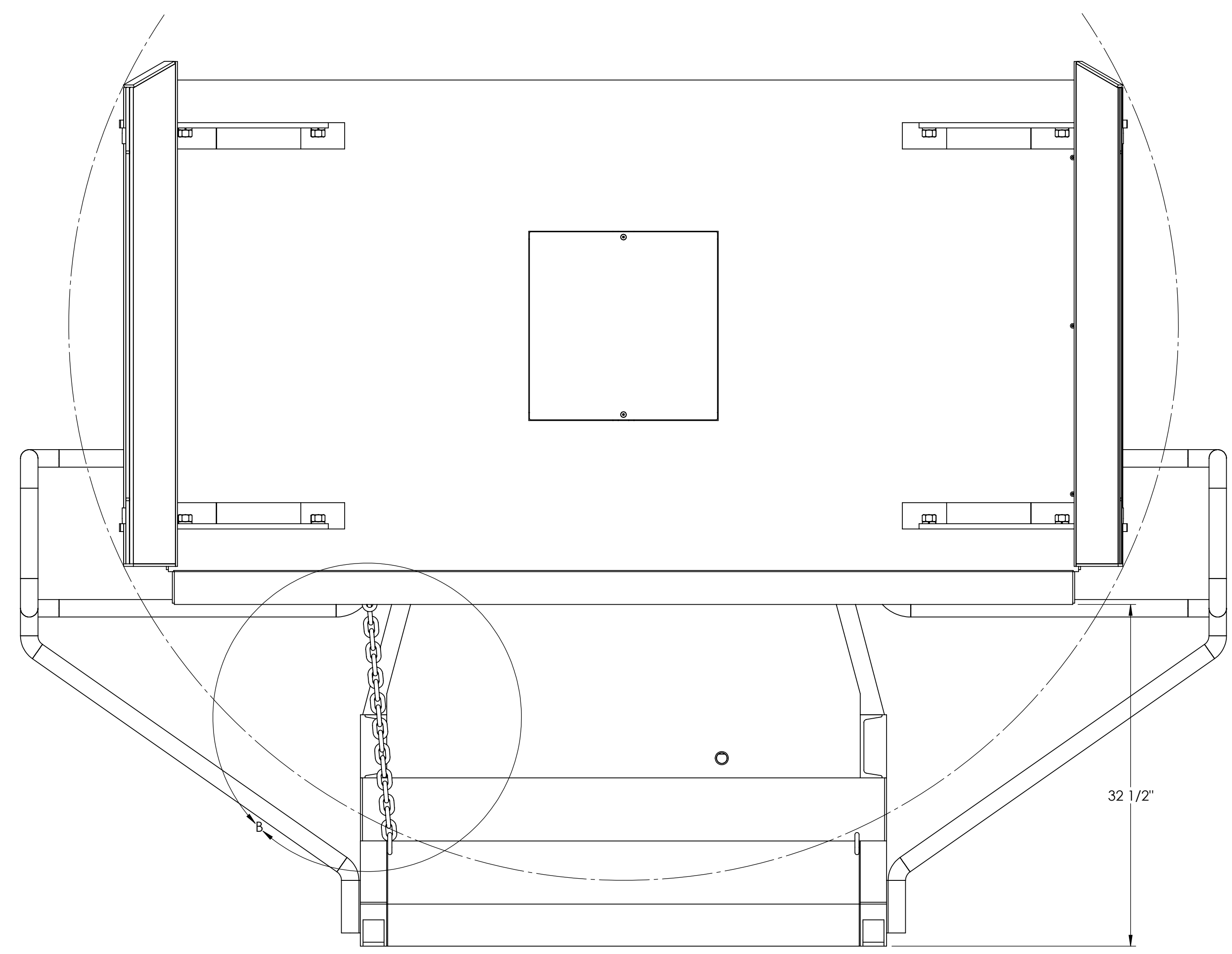
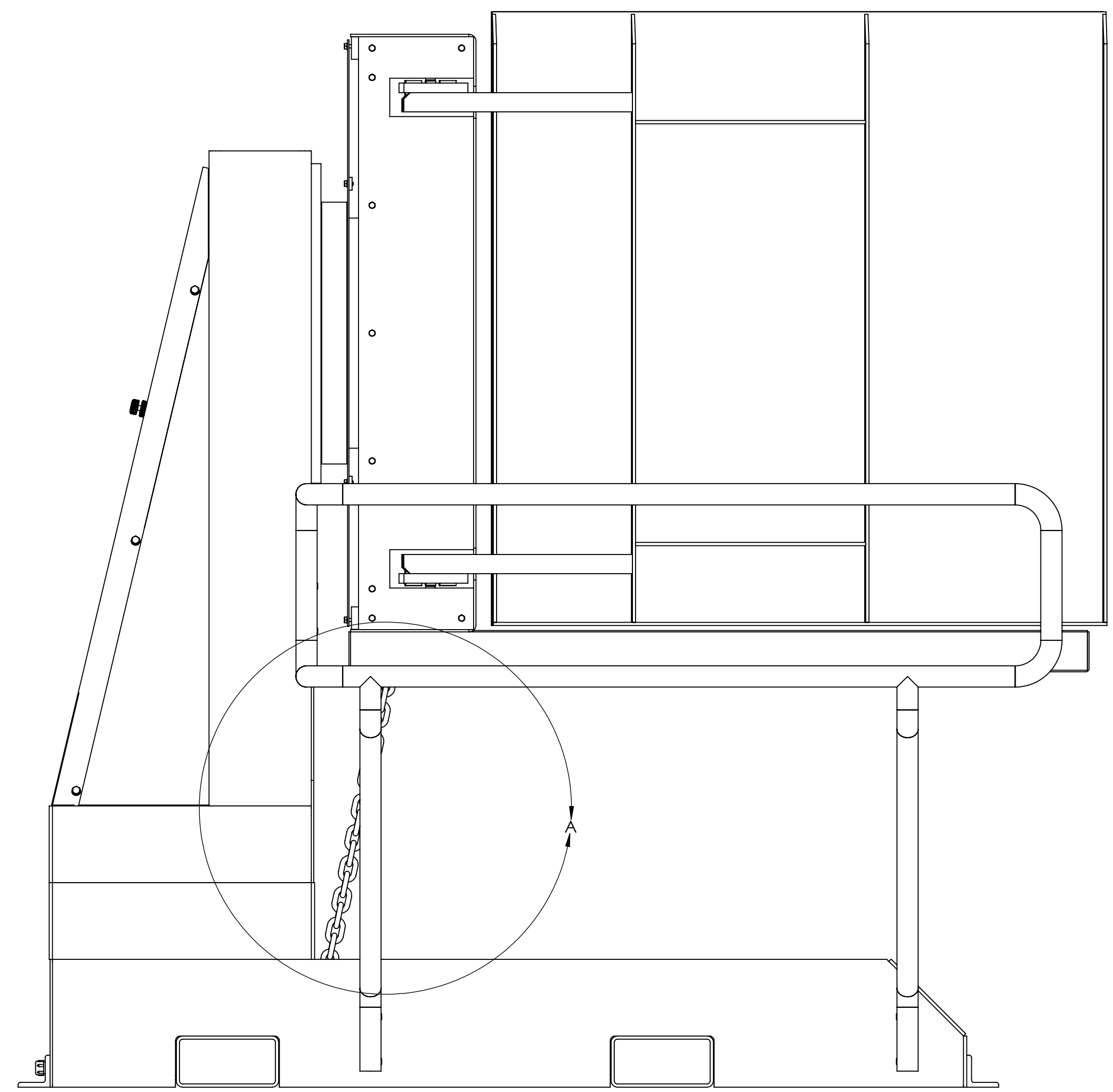
A

D

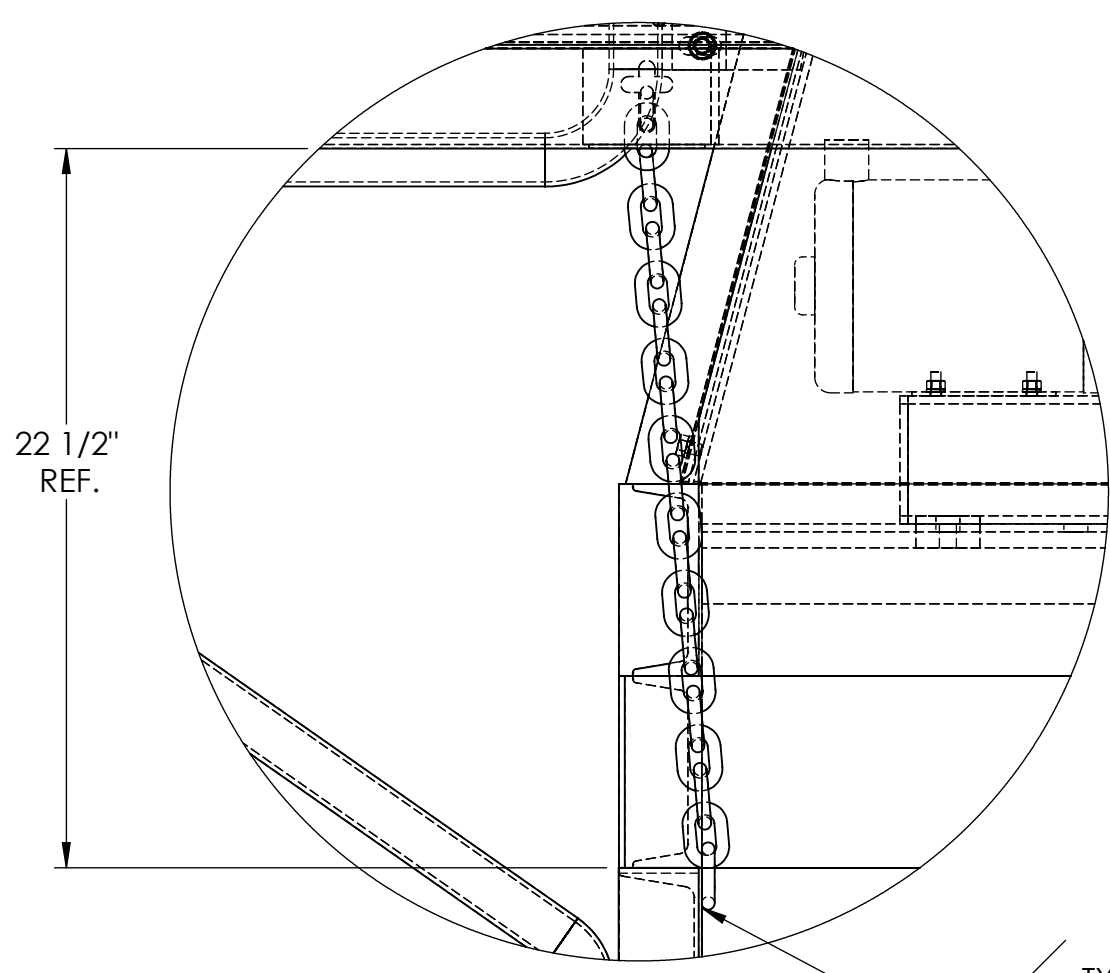
C

B

A



1/2" TYP.  
DETAIL A  
SCALE 1 : 6



1/4" TYP.  
DETAIL B  
SCALE 1 : 6

NOTE:  
1. 22 LINKS PER SIDE APPROXIMATE.

THIS DRAWING MUST BE AT REVISION: 'E'

Released SCALE	3RD ANGLE PROJECTION	FRACTIONS	± 1/8	DR	SDP	DATE	09/19/08
		.XXX	± .005		CK		DATE
PROJECT: -		UNLESS OTHERWISE SPECIFIED DIMENSIONS ARE IN INCHES	REFERENCE	CAGE CODE	06328	WT	4028.7 LB
USE OF PROPRIETARY INFORMATION LIMITED TO WRITTEN AGREEMENT		TITLE	TL SR44 48.00X48.00X84.00 460 3.2 CPI PB	SCALE	1:8	MODEL	
		SIZE	D	DWG. NO.	4433477	REV	E
						SHEET 2 OF 2	

8

7

6

5

4

3

2

1