



SPCC Compliant Products

Over 50 Unique Products!



www.SpillContainment.com

Spill Prevention, Control and Countermeasures Rule

A. BACKGROUND:

- Under authority of The Federal Water Pollution Control Act (as amended by The Clean Water Act) the SPCC rule took effect on January 10, 1974. Its purpose is to prevent oil and oil-related materials from reaching navigable waters and adjoining shorelines. Parts of the original rule were unclear (i.e., container size was not specified) and compliance was expensive for small business due to the need to obtain certification by a Professional Engineer (PE). As a result, the original rule was revised in July 2002. Various extensions have taken place since then that address special cases. (See section F below).

B. SUMMARY:

- Facilities subject to the rule must prepare and implement a plan to prevent any discharge of “oil” into or upon navigable waters of the U.S. (including groundwater that leads to surface water) or adjoining shorelines. This written plan is called an SPCC Plan.
- Unlike oil spill contingency plans that address spill cleanup measures after a spill has occurred, SPCC Plans ensure that facilities put in place containment and other countermeasures that would prevent oil spills that could reach navigable waters.
- The SPCC Plan must address: (a) operating procedures the facility implements to prevent oil spills; (b) control measures installed to prevent oil from entering navigable waters (i.e. secondary containment); (c) countermeasures to contain, clean up and mitigate the effects of oil spills.

C. REGULATED MATERIALS:

- Animal oils, fats and greases (including oils from fish or marine mammals), asphalt, aviation gasoline, bunker fuel, crude oil, cutting oil/machine coolants, dielectric fluid, diesel fuel, heating oil, gasoline, greases, hydraulic oil, jet fuel, lubricating oil, mineral spirits, motor oil, naptha, natural gas condensate, oil refuse, oily wastes (other than oil mixed with dredged soil), stoddard solvent, synthetic oils, tall oil, turpentine, residual fuels, used oil, vegetable oils (including oils from nuts, seeds, fruits and kernels).

D. WHAT FACILITIES ARE REGULATED?

- Facilities with combined (indoor and outdoor), above-ground **oil storage capacity** (not actual gallons on site) dedicated to any of the regulated materials **greater than 1,320 gallons** or a completely buried storage capacity greater than 42,000 gallons must comply.



ULTRA-CONTAINMENT BERMS®



ULTRA-DRAINSEALS®



ULTRA-HARDTOPS®



ULTRA-TRACKPANS®

- To calculate oil storage “capacity”, **all containers with a capacity of 55 gallons or more are included.**
- Overall, the Rule applies to owners or operators of facilities that drill, produce, gather, store, use, process, refine, transfer, distribute or consume oil or oil products.

E. WHAT ACTIONS ARE NECESSARY FOR COMPLIANCE?

- All qualifying drums and tanks must have secondary containment and be included in the written Plan. **Facilities with above-ground oil storage capacity of 10,000 gallons or less are permitted to self-certify their Plan (no PE required) if they meet certain criteria related to spill history.** Secondary containment is also required for loading and unloading areas for tanker trucks and railcars. Secondary containment must be equal to the largest vessel. In the case of a railcar, the containment area must provide a means to divert a significant spill to a retention pond, oil/water separator, etc.
- The Plan must include a facility diagram, and must mark the location and contents of each container. Secondary containment must be constructed so that any discharge from a primary containment system (i.e. drum, tank or pipe) will not escape before cleanup occurs.

F. EPA HAS ISSUED COMPLIANCE DATE EXTENSIONS — WHAT DOES THAT MEAN?

- EPA has caused a great deal of confusion related to its various extensions. Soon after the 2002 rule changes were published, concerns expressed by industry focused on four (4) problem areas:
 1. Qualified, oil-filled operational equipment
 2. Motive power containers (e.g. vehicle fuel tanks)
 3. Mobile refuelers
 4. Animal fats & vegetable oils at onshore & offshore oil production, drilling facilities

The most recent extension date (currently July 1, 2009) applies only to the four (4) special cases listed above. The July 1, 2009 date is not an extension date for general compliance with SPCC.

G. WHO MUST COMPLY AND WHEN?

- Compliance dates for facilities (other than farms) are as follows:
 - A facility starting operation on or before August 16, 2002 MUST**
Maintain its existing Plan; must amend and implement the Plan no later than July 1, 2009. **Facilities in this group that do not currently have an SPCC Plan are out of compliance and are subject to regulatory action.**
 - A facility starting operation after August 16, 2002 through July 1, 2009 MUST**
Prepare and implement a Plan no later than July 1, 2009.
 - A facility starting operation after July 1, 2009 MUST**
Prepare and implement a Plan before beginning operations.

H. OTHER SPCC-RELATED ITEMS

- An SPCC inspector is **not** required to provide advance notice of a facility inspection.
- Facility owners or operators regulated by SPCC must designate a person who is accountable for discharge prevention and who reports directly to management.
- In general, “transfers” of oils are regulated by SPCC; “transportation” of oil is not regulated.



ULTRA-275 CONTAINMENT SUMP

- Eliminate costly spills while storing fuels, oils and other hazardous liquids.
- Rugged, all polyethylene construction will not rust or corrode.
- Optional 3/4" drain fitting allows use with Ultra-SelfBailer (see below).
- **Meets EPA Container Storage Regulation 40 CFR 264.175.**
- **Helps comply with SPCC and NPDES, 40 CFR 122.26 (1999).**

Pullover Cover option keeps rainwater out, yet allows easy access for pumping waste collection activities.



ULTRA-550 CONTAINMENT SUMP

- Economical containment for 500 and 550 gallon fuel and oil tanks.
- 100% polyethylene construction will not rust or corrode; provides superior chemical and weather resistance.
- Optional 3/4" drain fitting available.
- Use with optional Ultra-Self Bailer (Part# 9935) for outdoor containment — Self Bailer allows clean stormwater to passively drain from sump while capturing hydrocarbons.
- **Meets Stormwater, SPCC and EPA Containment Regulations.**



Note: To use Ultra-SelfBailer, the Ultra-550 Containment Sump WITH DRAIN, Part# 2820, must be specified when ordering. (See page 19 for details.)

ULTRA-1000 CONTAINMENT SUMP

- Contains 1000-gallon fuel tanks.
- 1-piece molded polyethylene design — will not rust or corrode.
- Nestable design saves freight and minimizes storage space.
- Optional 3/4" drain fitting available — allows use with Ultra-SelfBailer.
- 2" drain fitting also available.
- Use with optional Ultra-Self Bailer (Part# 9935) for outdoor containment — Self Bailer allows clean stormwater to passively drain from sump while capturing hydrocarbons.
- **Meets Stormwater, SPCC and EPA Containment Regulations.**



ULTRA-275 CONTAINMENT SUMP	ULTRA-550 CONTAINMENT SUMP	ULTRA-1000 CONTAINMENT SUMP
Part# 2800: no drain • Part# 2801: with drain	Part# 2823: no drain • Part# 2820: with drain	Part# 2830: no drain • Part# 2831: with 3/4" drain • Part# 2832: with 2" drain
Outside Dimensions: 84 1/2" x 43 3/4" x 29" (2147 mm x 1112 mm x 737 mm)	Outside Dimensions: 87" x 62 1/4" x 32 3/4" (2210 mm x 1582 mm x 832 mm)	Outside Dimensions: 148" x 63" x 33" (3759 mm x 1600 mm x 838 mm)
Inside Top: 80" x 39"; Inside Bottom 73" x 31" (2032 mm x 991 mm); (1855 mm x 788 mm)	Inside Bottom: 75 3/4" x 47 3/4" (1925 mm x 1213 mm)	Inside Bottom: 144" x 56" (3315 mm x 1156 mm)
Weight: 90 lbs. (41 kg)	Weight: 108 lbs. (49 kg)	Weight: 180lbs. (82 kg)
Containment Capacity: 360 gallons (1363 L)	Containment Capacity: 605 gallons (2291 L)	Containment Capacity: 1,100 gallons (4164 L)
Optional PullOver Cover, Part# 2810; Ultra-SelfBailer	Option: Ultra-SelfBailer	Option: Ultra-SelfBailer

- Rugged polyethylene construction offers excellent chemical resistance.
- Unlike alternative products, the open containment sump does not require spills to flow inside the double walls to meet EPA regulations — easy to clean; eliminates residue concerns as related to compatibility.
- Can be used with 55- or 30-gallon drums — nylon strap keeps drums secure.



- Ergonomically designed for safe and easy handling.
- Large 10" wheels roll easily over shop and factory floors.
- Part# 1312 has large, pneumatic wheels for soft or uneven surfaces.
- Large containment sump (66 gallons) meets SPCC and EPA Containment Regulations.



ULTRA-DRUMTRUCK

Part# 1310: indoor and smooth surfaces Part# 1312: all terrain use	Containment Capacity: 66 gallons (250 L)
Dimensions: 32" x 72 1/4" x 27" (813 mm x 1835 mm x 686 mm) Weight: 118 lbs. (54 kg)	Weight Capacity: 600 lbs. (273 kg)

Ultra SpillPallet Plus Models

Combine High-Strength And Low-Profile Features While Meeting EPA Container Storage Regulations

- Nearly 50% lower than standard spill pallets, drum handling is safer and less strenuous.
- Available in 1-drum, 2-drum and 4-drum configurations.
- Removable grates feature a non-slip surface.



Superior weight capacity of the 4-drum model also allows use with IBC tanks.



- All models meet SPCC and EPA Container Storage Regulation 40 CFR 264.175 for use with drums.

U.S. Patent No. 5,615,608

ULTRA-SPILLPALLET PLUS MODELS

Ultra-SpillPallet P1 Plus		Ultra-SpillPallet P2 Plus		Ultra-SpillPallet P4 Plus	
Part# 9606: no drain	Part# 9607: with drain	Part# 9610: no drain	Part# 9611: with drain	Part# 9630: no drain	Part# 9631: with drain
Dimensions: 40" x 40" x 12" (1016 mm x 1016 mm x 305 mm)	Weight: 51 lbs. (23 kg)	Dimensions: 65 1/2" x 40" x 8 3/4" (1664 mm x 1016 mm x 222 mm)	Weight: 88 lbs. (40 kg)	Dimensions: 62" x 62" x 8 3/4" (1575 mm x 1575 mm x 222 mm)	Weight: 125 lbs. (57 kg)
Uniformly Distributed Load: 800 lbs. (364 kg)	Containment Capacity: 62 gallons (235 L)	Uniformly Distributed Load: 4,500 lbs. (2045 kg)	Containment Capacity: 66 gallons (250 L)	Uniformly Distributed Load: 9,000 lbs. (4091 kg)	Containment Capacity: 75 gallons (284 L)

Options Available: Polyethylene Loading Ramp (see specifications on page 13), PullOver Covers

To see more SpillPallets, visit our website, www.SpillContainment.com.

UltraSpillDeck Bladder Systems®

Hidden Containment Bladder Automatically Unfurls To Capture Large Spills Or Drum Leaks

U.S. Patent No. 5,642,834; 5,007,557
Canadian Patent No. 2,030,984



Part# 1320

Small spills and leaks are captured in the 11 gallon sump.



Large, catastrophic leaks flow into the bladder through a bulkhead fitting. Protective "trap door" opens automatically to allow bladder to unfurl.



SPCC
COMPLIANT

Rugged, double layer polyethylene bladder allows 66 gallons total containment.

- Ultra-SpillDeck Bladder Systems are low profile, polyethylene containment decks which meet EPA and Uniform Fire Code Spill Containment Regulations. Available in 1, 2 and 4-drum modules, the low 5 3/4" deck height allows safe and convenient drum loading, even without drum handling equipment. Add the optional polyethylene loading ramp for even greater handling ease.
- Low 5 3/4" deck height is the same as wooden pallets — allows drums to be "jockeyed" onto SpillDeck Systems when standard drum handling equipment is not available.
- Overspills and small leaks are captured in the SpillDeck's sump; catastrophic leaks deploy the bladder, allowing the system to meet EPA and Uniform Fire Code Spill Containment Regulations.
- SpillDeck Bladder Systems require adequate aisle space to allow the Bladder to unfurl properly.
- All models meet SPCC and EPA Container Storage Regulations.



Part# 2329



Part# 2330

ULTRA-SPILLDECK BLADDER SYSTEMS

Ultra-SpillDeck P1 Bladder System	Ultra-SpillDeck P2 Bladder System	Ultra-SpillDeck P4 Bladder System
Part# 1320	Part# 2329	Part# 2330
Dimensions: 25 7/8" x 30 1/2" x 5 3/4" (657 mm x 775 mm x 146 mm)	Dimensions: 52" x 30 1/2" x 5 3/4" (1321 mm x 775 mm x 146 mm)	Dimensions: 52" x 56 5/8" x 5 3/4" (1321 mm x 1438 mm x 146 mm)
Weight: 27 lbs. (12 kg)	Weight: 44 lbs. (20 kg)	Weight: 66 lbs. (30 kg)
Uniformly Distributed Load: 1,500 lbs. (682 kg)	Uniformly Distributed Load: 3,000 lbs. (1364 kg)	Uniformly Distributed Load: 6,000 lbs. (2727 kg)
Containment Capacity: 66 gallons (250 L)	Containment Capacity: 77 gallons (291 L)	Containment Capacity: 99 gallons (375 L)
Sump Capacity prior to spill entering bladder: 11 gallons (41 L)	Sump Capacity prior to spill entering bladder: 22 gallons (83 L)	Sump Capacity prior to spill entering bladder: 44 gallons (166 L)

U.S. Patent No. 5,642,834; 5,007,557
Canadian Patent No. 2,030,984

Low Profile, "In Line" Designs Save Valuable Floor Space And Comply With Spill Containment Regulations



5-Drum InLine SpillDeck Part #2333, with optional loading ramp.



InLine Models are pre-drilled and can be quickly assembled without tools. The bulkhead fittings "lock" connected modules together and allow spills to flow from one module to the next.



4-Drum InLine SpillDeck Part #2361 with Ultra-DrumRack P1 Part# 9030.

- Standard InLine Models include 3-drum, 4-drum, 5-drum and 6-drum configurations.
- Narrow 25 7/8" depth allows drums to be stored in a single row along facility walls — minimizes space requirements.
- Low profile design reduces safety and handling concerns found with taller containment pallets.
- Additional SpillDeck modules can be easily connected to an existing InLine configuration — allows more drums to be added to your containment area as storage needs grow.
- **All models meet SPCC, EPA Container Storage Regulation 40 CFR 264.175 and Uniform Fire Code Spill Containment Regulations.**

3-, 4- and 5-Drum Units utilize a hidden containment bladder for additional sump capacity to meet EPA and UFC Spill Containment Regulations.



ULTRA-INLINE SPILLDECKS

Ultra-InLine SpillDeck 3-Drum Model	Ultra-InLine SpillDeck 4-Drum Model	Ultra-InLine SpillDeck 5-Drum Model	Ultra-InLine SpillDeck 6-Drum Model
Part# 2360	Part# 2361	Part# 2333	Part# 2334
Dimensions: 77 7/8" x 25 7/8" x 5 3/4" (1978 mm x 657 mm x 146 mm)	Dimensions: 104" x 25 7/8" x 5 3/4" (2642 mm x 657 mm x 146 mm)	Dimensions: 129 7/8" x 25 7/8" x 5 3/4" (3299 mm x 657 mm x 146 mm)	Dimensions: 156" x 25 7/8" x 5 3/4" (3962 mm x 657 mm x 146 mm)
Weight: 67 lbs. (30 kg)	Weight: 84 lbs. (38 kg)	Weight: 107 lbs. (49 kg)	Weight: 132 lbs. (60 kg)
Uniformly Distributed Load: 4,500 lbs. (2045 kg)	Uniformly Distributed Load: 6,000 lbs. (2727 kg)	Uniformly Distributed Load: 7,500 lbs. (3409 kg)	Uniformly Distributed Load: 9,000 lbs. (4091 kg)
Containment Capacity: 88 gallons (333 L)	Containment Capacity: 99 gallons (375 L)	Containment Capacity: 110 gallons (416 L)	Containment Capacity: 66 gallons (250 L)
Option: Loading Ramp Part# 1089, Dimensions 24" x 32" x 5 3/4" (610 mm x 813 mm x 146 mm), Weight 17 lbs. (8 kg)			



**Ultra-InLine
SpillDecks**
are perfect for
limited space
applications.

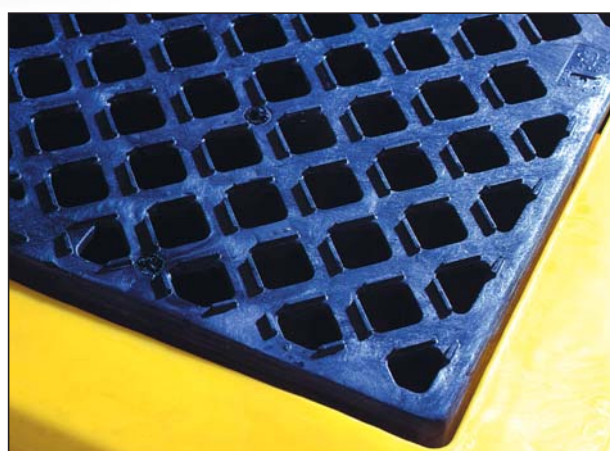


Low Profile, Modular SpillDecks Allow You To Design And Create A Containment System That Meets Your Specific Needs

Ultra-SpillDecks are available in 1, 2 and 4-drum modules. Modules are easily connected together with bulkhead fittings to allow a virtually unlimited number of customized configurations.



Bulkhead fittings allow spills to flow to adjacent sump areas, increasing containment capacity while maintaining a low profile.



All Ultra-SpillDecks offer slip-resistant grating to reduce OSHA slip hazards.

- Polyethylene construction meets a wide range of chemical compatibility needs.
- Low profile, 5 3/4" height offers safe and convenient loading/unloading of drums.
- Applications include hazardous waste collection, storage of virgin chemicals, drum dispensing and battery storage.
- Optional Loading Ramps provide added drum handling safety and convenience.
- **Meet SPCC, EPA Container Storage Regulation 40 CFR 264.175 and Uniform Fire Code Spill Containment Regulations.**

Specifications on next page →



Connect your choice of 1, 2 and 4-drum SpillDeck modules to custom-design your own secondary containment storage pad.



The bulkhead fittings not only “lock” connected modules together, but allow spilled liquid to flow from one module to the next. Ultra-SpillDeck Containment Systems meet SPCC, EPA and Uniform Fire Code Spill Containment Regulations when assembled in configurations of six (6) drums or more.

U.S. Patent No. 5,562,047

ULTRA-SPILLDECKS			
Ultra-SpillDeck P1 Module	Ultra-SpillDeck P2 Module	Ultra-SpillDeck P4 Module	Ultra-SpillDeck Loading Ramp
Part# 1321	Part# 1086	Part# 1072	Part# 1089
Dimensions: 25 7/8" x 25 7/8" x 5 3/4" (657 mm x 657 mm x 146 mm)	Dimensions: 52" x 25 7/8" x 5 3/4" (1321 mm x 657 mm x 146 mm)	Dimensions: 52" x 52" x 5 3/4" (1321 mm x 1321 mm x 146 mm)	Dimensions: 24" x 32" x 5 3/4" (610 mm x 813 mm x 146 mm)
Weight: 23 lbs. (10 kg)	Weight: 40 lbs. (18kg)	Weight: 62 lbs. (28kg)	Weight: 17 lbs. (8 kg)
Uniformly Distributed Load: 1,500 lbs. (682 kg)	Uniformly Distributed Load: 3,000 lbs. (1364 kg)	Uniformly Distributed Load: 6,000 lbs. (2727 kg)	Options: 26" T-Strip, 2 required/long side Bulkhead Fitting, Sidewall Plug
Containment Capacity: 11 gallons (42 L)	Containment Capacity: 22 gallons (83 L)	Containment Capacity: 44 gallons (167 L)	

Ultra-SpillDeck P6 and P8®

Available in 6-drum and 8-drum models, Ultra-SpillDecks are perfect for satellite collection of hazardous wastes or storage of virgin chemicals.

- One-piece, molded sump with elevated 2' x 4' black grates.
- Polyethylene grates feature slip resistant, "diamond plate" surface design.
- Deck holds up to 1,500 lbs. per drum UDL (uniformly distributed load).
- Designed for use with Ultra-SpillDeck Loading Ramp (Part# 1089).
- Meet SPCC, EPA and Uniform Fire Code Spill Containment Regulations.



ULTRA-SPILLDECKS	
Ultra-SpillDeck P6	Ultra-SpillDeck P8
Part# 1175	Part# 1075
Dimensions: 74 1/4" x 50" x 5 1/4" (1886 mm x 1270 mm x 133 mm)	Dimensions: 98 1/2" x 50" x 5 1/4" (2502 mm x 1270 mm x 133 mm)
Weight: 86 lbs. (39 kg)	Weight: 110 lbs. (50 kg)
Uniformly Distributed Load: 9,000 lbs. (4091 kg)	Uniformly Distributed Load: 12,000 lbs. (5455 kg)
Containment Capacity: 66 gallons (250 L)	Containment Capacity: 75 gallons (284 L)

To see more SpillDecks, visit our website, www.SpillContainment.com.

UltraHardTop Plus Models®

Store 1, 2 or 4 Drums Outdoors

- Tall head space easily accommodates rotary drum pumps and large conical funnels.
- 100% Polyethylene construction will not rust or corrode.
- Simply lift from waist-level to raise the roll-top cover — no need to bend over and reach near ground level as required by alternative products.



Ultra-HardTop P2 Plus is lockable with a standard padlock, and can be safely lifted by forklift with drums in place.



Loading Ramp (Part# 0676) stores neatly inside the containment unit when not in use.



Part# 9612



Part# 9640

Tall head space (25 3/4") allows use with drum pumps and conical funnels.



Part# 9636



- Lockable with a standard padlock, and can be safely lifted by forklift with drums in place.
- Optional compact loading ramp (for P2 and P4) stores neatly inside when not in use — even when loaded with drums.

- Meet EPA Container Storage Regulation 40 CFR 264.175 and SPCC Regulations.



ULTRA-HARDTOP PLUS MODELS

Ultra-HardTop P1 Plus	Ultra-HardTop P2 Plus	Ultra-HardTop P4 Plus
Part# 9640: no drain Part# 9641: with drain	Part# 9612: no drain Part# 9613: with drain	Part# 9636: no drain Part# 9637: with drain
Dimensions: 36" x 36" x 66" (915 mm x 915 mm x 1677 mm)	Dimensions: 67 1/4" x 41 1/4" x 74" (1708 mm x 1047 mm x 1880 mm)	Dimensions: 64 1/2" x 62" x 79" (1638 mm x 1575 mm x 2007 mm)
Weight: Top 36 lbs. (17 kg) Weight: Bottom 26 lbs. (12 kg)	Weight: 260 lbs. (118 kg)	Weight: 440 lbs. (200 kg)
Load Capacity: 800 lbs. (363 kg)	Load Capacity: 4,500 lbs. (2041 kg)	Load Capacity: 9,000 lbs. (4082 kg)
Containment Capacity: 64 gallons (243 L)	Containment Capacity: 66 gallons (250 L)	Containment Capacity: 75 gallons (284 L)
Options: Dolly, Part# 0417	Option: Loading Ramp, Part# 0676 — stores inside containment unit when not in use	

To see more HardTops, visit our website, www.SpillContainment.com.

UltraHardTop Plus Models®

Safely Store Multiple Drums Outdoors



- Available in 8, 12, 16 and 20-drum models. Extender Kits are available to expand capacity beyond 20-drums.
- All polyethylene construction — offers excellent chemical resistance, will not rust or corrode.
- Separate, lockable compartments feature a unique “2-way” entry system — allows quick access to all four (4) drums.
- Roll-top covers can be easily lifted from waist height to access drum tops.
- Swing-out doors provide safety and convenience for loading or unloading drums.
- Low-profile (8-3/4” height) containment pallet positions drum-tops at a safe, convenient level to pour wastes into funnels or to use drum pumps.



- Rugged, 9,000 lb. uniformly distributed load (UDL) capacity per compartment allows safe storage of IBC tanks as well as drums.
- Units ship partially unassembled for freight savings.
- Multiple “4-drum compartments” offer flexible usage for a broad range of operations, including: storage of virgin chemicals, active hazardous waste collection and storage of spill response supplies. Internal walls and separate sumps allow materials to be segregated.
- Use optional Ramp (Part# 0676) for easier drum handling — stores inside HardTop when not in use.

ULTRA-HARDTOP PLUS MODELS	
Part# 9650: HardTop P8, no drain, 815 lbs. (370 kg) Part# 9651: HardTop P8, with drain, 815 lbs. (370 kg) Dimensions: 126" x 62" x 79" (3201 mm x 1575 mm x 2007 mm) Capacity: (8) 55-gallon drums (220 L)	Part# 9652: HardTop P12, no drain, 1190 lbs. (540 kg) Part# 9653: HardTop P12, with drain, 1190 lbs. (540 kg) Dimensions: 188" x 62" x 79" (4776 mm x 1575 mm x 2007 mm) Capacity: (12) 55-gallon drums (220 L)
Part# 9654: HardTop P16, no drain, 1565 lbs. (710 kg) Part# 9655: HardTop P16, with drain, 1565 lbs. (710 kg) Dimensions: 250" x 62" x 79" (6350 mm x 1575 mm x 2007 mm) Capacity: (16) 55-gallon drums (220 L)	Part# 9656: HardTop P20, no drain, 1940 lbs. (880 kg) Part# 9657: HardTop P20, with drain, 1940 lbs. (880 kg) Dimensions: 312" x 62" x 79" (7925 mm x 1575 mm x 2007 mm) Capacity: (20) 55-gallon drums (220 L)
Part# 9658: 4-Drum HardTop Extender Kit, no drain, 375 lbs. (171 kg) Part# 9659: 4-Drum HardTop Extender Kit, with drain, 375 lbs. (171 kg)	
Weight Capacity: 9,000 lbs. UDL per compartment (4083 kg UDL per compartment) Containment Capacity: 75 gallons per compartment (284 L per compartment)	
Options: Polyethylene Loading Ramp — Part# 0676	

U.S. Patent No. 5,615,608

- Meets EPA Container Storage Regulation 40 CFR 264.175 and helps comply with NPDES, 40 CFR 122.26 (1999). Considered a Stormwater Management “Best Management Practice” product (BMP). Also meets SPCC Regulations for secondary containment of hydrocarbons.

Ultra IBC SpillPallet Plus®

Economical And Portable Containment For IBCs



Part# 1157

- Low profile, 28" overall height — allows safe and convenient IBC tank handling and dispensing.
- All polyethylene construction — offers excellent chemical resistance and will not rust or corrode.
- Forkliftable — allows convenient positioning to desired locations.
- Low-cost design with value-added features and benefits.
- Large 52" x 52" deck allows safe and convenient placement of IBC tanks.
- Small footprint — 62" x 62" unit requires minimal floor space.
- Available with optional Bucket Shelf (Part# 1160) — catches leaks or spills during dispensing.
- **360-gallon sump capacity meets SPCC and EPA Container Storage Regulations.**

ULTRA-IBC SPILLPALLET PLUS		
Ultra-IBC SpillPallet Plus		Ultra-BucketShelf
Part# 1157: no drain • Part# 1158: with drain	Containment Capacity: 360 gallons (1363 L)	Part# 1160
Dimensions: 62" x 62" x 28" (1575 mm x 1575 mm x 711 mm)	Uniformly Distributed Load: 8,500 lbs. (3864 kg)	Dimensions: 19 1/2" x 16" x 14 1/2" (495 mm x 406 mm x 368 mm)
Weight: 280 lbs. (127 kg)		Weight: 10 lbs. (5 kg)

U.S. Patent No. 5,615,608

Ultra Twin IBC SpillPallet®

Save Money — Store Two IBC Tanks Side-By-Side



- Use for intermediate bulk containers (IBCs), drums, or other large vessels. (All materials stored must be chemically compatible.)
- Available with optional Bucket Shelf for either or both sides — catches small leaks or spills during dispensing.
- Grates are easily removed for quick clean-up.
- **One-piece, molded sump holds 535 gallons — meets EPA Containment and SPCC Regulations for two IBC tanks.**



ULTRA-TWIN IBC SPILLPALLET		
Part# 1140: no drain Part# 1144: with drain	Part# 1141: no drain, w/1 Right Side Bucket Shelf	Part# 1142: no drain, w/1 Left Side Bucket Shelf
Part# 1143: no drain, w/ 2 Bucket Shelves	Part# 1145: with drain, w/1 Right Side Bucket Shelf	Part# 1146: with drain, w/1 Left Side Bucket Shelf
Part# 1147: with drain, w/ 2 Bucket Shelves Bucket Shelf: 19 1/2" x 16" x 14 1/2" (3162 mm x 1565 mm x 559 mm)	Dimensions: Twin IBC SpillPallet — 124 1/2" x 61 5/8" x 22" (3162 mm x 1565 mm x 559 mm)	
Part# 1160: Bucket Shelf Bucket Shelf: 10 lbs. (5 kg)	Weight: Twin IBC SpillPallet — 451 lbs. (205 kg) Gallon Capacity: 535 gallons (2025 L)	Weight Capacity: 8,000 lbs. UDL/side (3636 kg)

To see more IBC SpillPallets, visit our website, www.SpillContainment.com.



- Upper roll-top door and lower swing-out doors combine to allow easy and convenient access to IBC.
- Safely stores an IBC tank with maximum dimensions of 52" x 52" x 61".
- Low profile (28" height), 360-gallon containment sump allows safe material handling and dispensing.
- Forkliftable, lockable, all-polyethylene design will not rust or corrode.
- **Helps meet new Stormwater Management Regulations — NPDES, 40 CFR 122.26 (1999).**
- **Meets SPCC and EPA Container Storage Regulation 40 CFR 264.175.**

ULTRA-IBC HARDTOP

Part# no drain: 1162 • Part# with drain: 1161	Weight: 525 lbs. (239 kg)
Outside Dimensions: 64.5" x 62" x 96" (1639 mm x 1575 mm x 2439 mm)	Containment Capacity: 360 gallons (1363 L)
	Uniformly Distributed Load: 8,500 lbs. (3856 kg)

Ultra-Twin IBC HardTop (Part# 1140) also available for outdoor storage of two IBC tanks.

U.S. Patent No. 5,615,608

Outdoor Storage for Two IBC Tanks

- Uses same sump as Ultra-Twin IBC SpillPallet (see opposite page).
- Unique, lockable, dual closure allows quick access to tanks.
- Roll-top covers can be easily lifted for routine visual inspection.
- Swing-out doors provide safety and convenience for loading/unloading tanks.
- Safely stores IBC tanks, with maximum dimensions of 52" x 52" x 61".
- **Meets Stormwater, SPCC and EPA Container Storage Regulations.**



ULTRA-TWIN IBC HARDTOP

Part# 1148: no drain Part# 1149: with drain	Weight: 967 lbs. (440 kg)	Sump Capacity: 535 gallons (2025 L) Weight Capacity: 8,000 lbs. UDL/side (3636 kg)
--	------------------------------	---

Dimensions: 128" x 67" x 96" (3251 mm x 1702 mm x 2438 mm)

Option: Bucket Shelf, Part# 1160

Ultra Modular IBC SpillPallets®

Meet EPA Regulations With Low-Cost Spill Containment For Multiple IBC Tanks

- Indoor and Outdoor Models available for 2, 3, 4 or 5 tanks.
- Each IBC tank sits on a low-profile spillpallet with a containment capacity of 75 gallons — Expansion Tanks provide 65 gallons of additional capacity.
- 100% polyethylene construction — eliminates the potential for rust and corrosion.
- “Flow-through” bulkhead fittings connect spill pallets and Expansion Tanks together, allowing spills to be channeled throughout the containment system — containment capacity is thereby “borrowed” from adjacent spill pallets and Expansion Tanks.



3-Tank Model: 355 Gallon Capacity (Part# 1166)



3-Tank Model: 355 Gallon Capacity (shown in “L”-shaped configuration, Part# 1126)

- Meets SPCC and EPA Container Storage Regulation 40 CFR 264.175.
- Helps meet new Stormwater Management Regulations — NPDES, 40 CFR 122.26 (1999).



Pallet to Pallet connection



Pallet to Expansion Tank connection



4-Tank Model: 3
65 Gallon Capacity (Part# 1127)

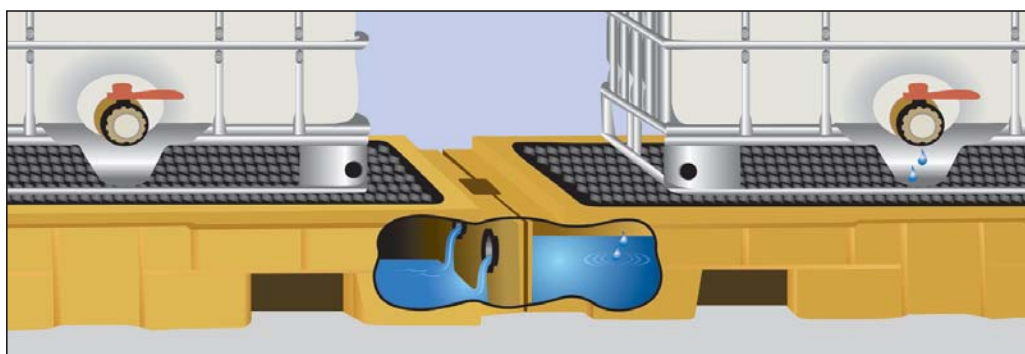


Illustration of how flow-through bulkhead fittings work

OUTDOOR MODEL FEATURES:

- Unique “roll top” enclosures and swing-out doors allow convenient loading and unloading of IBC tanks.
- Compartments are lockable for secure storage of hazardous materials.
- Optional Extender Kits (Part# 9658) provide for the addition of another compartment. (1 tank per Extender Kit).

ULTRA-MODULAR IBC SPILLPALLETS							Components Included (Qty)	
	Part#	Description	Dimensions	Weight Capacity	Gallon Capacity	Weight	Pallets	Exp. Tanks
INDOOR	1125	2-Tank Model	186" x 62" x 8 3/4" (4724 mm x 1575 mm x 222 mm)	9,000 lbs. (4083 kg) UDL per Pallet	280 gal. (1060 L)	310 lbs. (141 kg)	(2)	(2)
	1126	3-Tank Model	248" x 62" x 8 3/4" (6299 mm x 1575 mm x 222 mm)	9,000 lbs. (4083 kg) UDL per Pallet	355 gal. (1344 L)	435 lbs. (198 kg)	(3)	(2)
	1127	4-Tank Model	279" x 62" x 8 3/4" (7087 mm x 1575 mm x 222 mm)	9,000 lbs. (4083 kg) UDL per Pallet	365 gal. (1382 L)	531 lbs. (241 kg)	(4)	(1)
	1128	5-Tank Model	310" x 62" x 8 3/4" (7874 mm x 1575 mm x 222 mm)	9,000 lbs. (4083 kg) UDL per Pallet	375 gal. (1419 L)	625 lbs. (284 kg)	(5)	(0)
	1118	Assembly Kit	Includes hole saw, arbor and set of 2 tightening tools REQUIRED					
	9630	SpillPallet Only	62" x 62" x 8 3/4" (4724 mm x 1575 mm x 222 mm)	9,000 lbs. UDL (4083 kg)	75 gal. (284 L)	125 lbs. (141 kg)	NA	NA
OUTDOOR	1165	2-Tank Model	126" x 93" x 79" (3201 mm x 2363 mm x 2007 mm)	9,000 lbs. (4083 kg) UDL per Pallet	280 gal. (1060 L)	881 lbs. (400 kg)	(2)	(2)
	1166	3-Tank Model	188" x 93" x 79" (4776 mm x 2363 mm x 2007 mm)	9,000 lbs. (4083 kg) UDL per Pallet	355 gal. (1344 L)	1258 lbs. (571 kg)	(3)	(2)
	1167	4-Tank Model	250" x 93" x 79" (6350 mm x 2363 mm x 2007 mm)	9,000 lbs. (4083 kg) UDL per Pallet	365 gal. (1382 L)	1603 lbs. (728 kg)	(4)	(1)
	1168	5-Tank Model	312" x 62" x 79" (7925 mm x 1575 mm x 2007 mm)	9,000 lbs. (4083 kg) UDL per Pallet	375 gal. (1420 L)	1948 lbs. (884 kg)	(5)	(0)
	1118	Assembly Kit	Includes hole saw, arbor and set of 2 tightening tools REQUIRED					
	9658	Extender Kit	64" x 62" x 79" (1626 mm x 1575 mm x 2007 mm)	9,000 lbs. UDL (4083 kg)	75 gal. (284 L)	375 lbs. (141 kg)	NA	NA
Options/Accessories: Part# 1117 — 2" Bulkhead Fittings (Set of 2). Part# 1124 — Expansion Tank only, 61" x 31" x 12 1/2" (1550 mm x 788 mm x 318 mm), Capacity: 65 gallons, 30 lbs.								



Expansion Tank



Easy to Install, Modular Design

Center and Side Pans are 53.5" long; containment areas can be easily assembled to any length desired.



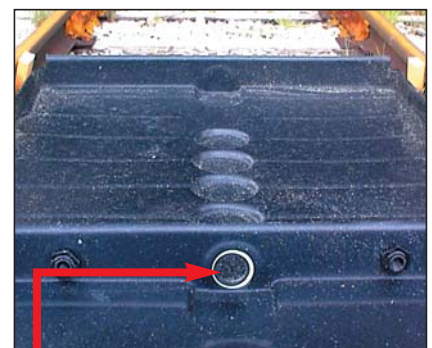
Ultra-TrackPans have been designed to provide spill containment at industrial rail sidings, locomotive maintenance and fueling facilities. Available in virtually any length, Ultra-TrackPans may be used to collect small spills and leaks OR to capture and channel off significant spills caused by defective equipment or a major overflow.

- **Prevent Costly Cleanup and Regulatory Fines.**
- **Slip-Resistant Design** — Entire top surface is safe to walk on, even when wet or oily.
- **All Polyethylene Construction** — Rugged TrackPans withstand harsh chemicals and are designed to function in temperatures ranging from -40° F to +140° F.
- **Sealed System** — Polyethylene gaskets keep spills from falling between the rails and Pans.
- **Trucks and other vehicles can drive over TrackPans with grates in place.***
- **Economical, easy to install.**
- **Helps comply with SPCC Regulations.**

*To drive over TrackPans, firm footing must be beneath the Pans; also must "ramp up" to Side Pans with asphalt or concrete.



ULTRA-TRACKPANS	
TrackPans with Grates, No Covers	TrackPan Covers Only
<p>Part# 9566: Center TrackPan with Grates (Includes 2 bulkhead fittings, 4 gaskets, 2 grates) Dimensions: 53 1/2" x 53 1/2" x 6" (1359 mm x 1359 mm x 153 mm) Weight: 106 lbs. (49 kg) • Containment Capacity: 18 gallons (69 L)</p>	<p>Part# 9580: Cover for Center TrackPan Dimensions: 56" x 54" (1423 mm x 1372 mm) Weight: 24 lbs. (11 kg)</p>
<p>Part# 9576: Side TrackPan with Grate (Includes 1 bulkhead fitting, 2 gaskets, 1 grate) Dimensions: 53 1/2" x 27 1/2" x 6" (1359 mm x 699 mm x 153 mm) Weight: 60 lbs. (28 kg) • Containment Capacity: 19 gallons (72 L)</p>	<p>Part# 9581: Cover for Side TrackPan Dimensions: 56" x 27 3/4" (1423 mm x 705 mm) Weight: 11 lbs. (5 kg)</p>
<p>Options: Part# 9584: Rebar Fasteners with Protective Caps, 20-Pack • Part# 9559: 3" dia. Bulkhead Fitting (for below-grade piping)</p>	



Large, 3"-diameter flow-through channels allow spills to quickly travel from one Pan to the next. Channels are located at the low point in each Center and Side TrackPan.

NOTE: Ultra TrackPans can also be ordered as complete systems: Popular 9-foot, 40-foot and 60-foot systems are available.

Unique, "Living Hinge" Design Allows Hands-Free Drive In/Drive Out
— No Need To Manually Raise Or Lower The Endwalls

Part# 8506



- Entry and exit walls are supported every 12" with a patented "living hinge".
- Once a vehicle has entered or exited, the walls automatically spring back to their vertical position.
- Both long sidewalls are held upright by PVC sidewall assemblies. Simply swivel the feet to lower the sidewalls for storage or transport to another location.

- **Helps comply with SPCC Regulations.**

Two-way "living hinge" design allows convenient, hands-free drive in/drive out.

Standard material of construction is Copolymer 2000™. XR5, polyurethane and other materials also available. Custom sizes available.

ULTRA-CONTAINMENT BERMS, ULTIMATE MODEL

Dimensions	Part #	Weight	Containment Capacity
12' x 60' x 1' (3.7 m x 18.3 m x .3 m)	8505	309 lbs. (140 kg)	5,385 gallons (20382 L)
15' x 50' x 1' (4.6 m x 15.2 m x .3 m)	8506	326 lbs. (148 kg)	5,610 gallons (21234 L)
15' x 66' x 1' (4.6 m x 20.1 m x .3 m)	8507	405 lbs. (184 kg)	7,405 gallons (28028 L)

Options: Ground Tarps, Track Belts, Self-Bailer, see page 19.

U.S. Patent No. 5,924,461

Collapsible Wall Model

Economical Design Offers Cost Savings and Secure Containment

- The Collapsible Wall Model Containment Berm features rugged PVC sidewall assemblies for sidewall support. Simply swivel the "feet" of the PVC supports to lower or raise the sidewalls in just seconds!
- Custom sizes available.
- Standard material of construction is Copolymer 2000™.

- **Meet SPCC and EPA Container Storage Regulation 40 CFR 264.175 with Collapsible Wall Model Containment Berms.**



Part# 8400

ULTRA-CONTAINMENT BERMS, COLLAPSIBLE WALL MODEL

Dimensions	Part#	Weight	Containment Capacity
4' x 6' x 1' (1.2 m x 1.8 m x .3 m)	8405	43 lbs. (20 kg)	179 gallons (678 L)
6' x 6' x 1' (1.8 m x 1.8 m x .3 m)	8403	46 lbs. (21 kg)	269 gallons (1018 L)
10' x 10' x 1' (3.0 m x 3.0 m x .3 m)	8400	78 lbs. (35 kg)	748 gallons (2831 L)
12' x 60' x 1' (3.7 m x 18.3 m x .3 m)	8404	323 lbs. (147 kg)	5,385 gallons (20382 L)
15' x 50' x 1' (4.6 m x 15.2 m x .3 m)	8401	319 lbs. (145 kg)	5,610 gallons (21234 L)
15' x 66' x 1' (4.6 m x 20.1 m x .3 m)	8402	420 lbs. (191 kg)	7,405 gallons (28028 L)

Options: Ground Tarps, Track Belts, Protective Storage Bags. Self-Bailer, see page 19.

To see more Containment Berms, visit our website, www.SpillContainment.com.

- Unique, urethane construction allows the pad to deform and seal off most drains — temporarily “seals” to any smooth surface.
- A valuable addition to any emergency response plan, spill kit, SPCC or stormwater management program.
- Ultra DrainSeal Plus is available for applications with drains that might be driven over with long-term outdoor exposure. Visit www.SpillContainment.com for more information.
- **BOTH sides will quickly seal drains — no specified “top” or “bottom.”**



Part# 2142



Optional Ultra-DrainSeal WallMount Units allow quick response to any spill — just “grab and go”!



Reinforcing mesh is “sandwiched” between layers of polyurethane — increases durability and resistance to tearing.

ULTRA-DRAINSEALS		ULTRA-DRAINSEAL WALLMOUNT
Flexible, non-absorbing material with reinforced, tear-resistant mesh One unit per box, easily cuts to special shapes and sizes Resists oil, water and most aggressive chemicals, cleans with soap and water Prevents contaminants from entering drain Helps comply with SPCC Helps comply with NPDES	Square: Part# 2126: 18" x 18" x 3/8" • 5 lbs. (458 mm x 458 mm x 10 mm • 2.5 kg) Part# 2127: 24" x 24" x 3/8" • 9 lbs. (610 mm x 610 mm x 10 mm • 4 kg) Part# 2130: 36" x 36" x 3/8" • 10 lbs. (915 mm x 915 mm x 10 mm • 4.5 kg) Part# 2131: 42" x 42" x 3/8" • 20 lbs. (1067 mm x 1067 mm x 10 mm • 9 kg) Part# 2132: 48" x 48" x 3/8" • 34 lbs. (1220 mm x 1220 mm x 10 mm • 15 kg) Part# 2133: 54" x 54" x 3/8" • 41 lbs. (1372 mm x 1372 mm x 10 mm • 18.5 kg)	Part# 2140: Fits 18" x 18", 24" x 24", 12" dia. and 20" dia. DrainSeals (458 mm x 458 mm, 610 mm x 610 mm, 305 mm dia. and 508 mm dia. DrainSeals) Part# 2142: Fits 36" x 36" and 30" dia. DrainSeals (915 mm x 915 mm and 762 mm dia. DrainSeals) Part# 2143: Fits 42" x 42", 48" x 48" and 42" dia. DrainSeals (1067 mm x 1067 mm, 1220 mm x 1220 mm, and 1067 mm dia. DrainSeals)
	Circular: Part# 2134: 12" dia. x 3/8" • 2 1/2 lbs. (305 mm dia. x 10 mm • 1 kg) Part# 2135: 20" dia. x 3/8" • 5 lbs. (508 mm dia. x 10 mm • 2.5 kg) Part# 2136: 30" dia. x 3/8" • 10 lbs. (762 mm dia. x 10 mm • 4.5 kg) Part# 2137: 42" dia. x 3/8" • 20 lbs. (1067 mm dia. x 10 mm • 9 kg)	Made of durable polyethylene. Velcro strap allows quick and easy access. Non-slip handle for easy carrying. Mounting hardware included.
	Rectangular: Part# 2124: 18" x 58" x 3/8" • 16 lbs. (458 mm x 1474 mm x 10 mm • 7 kg) Part# 2125: 36" x 58" x 3/8" • 30 lbs. (915 mm x 1474 mm x 10 mm • 13.5 kg)	

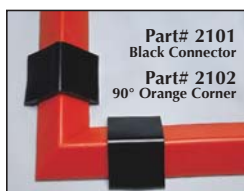
U.S. Patent No. 6,530,722

Temporary Berm Seals Off Spills From The Environment, Nearby Drains And Doorways



Part# 2100

- Standard 10-foot sections can be cut to various lengths to meet custom needs.
- Unique, urethane material “weeps” into small cracks and crevices to seal off liquid flow.
- SpillBerm is non-absorbing and is easily cleaned for repeated use.
- Flexible Ultra-SpillBerm will bend and turn to form almost any shape while temporarily “bonding” to any smooth surface.
- **Helps comply with NPDES and SPCC Regulations.**



Decide what shape or configuration is required and use optional Connectors and 90° Corners to complete the area.

- Applications include:
 - Spill response
 - Temporary secondary containment
 - Sealing off of doorways during washdown operations

ULTRA-SPILLBERM	
Part# 2100: Orange • Part# 2050: Black	
Dimensions: 10' x 4" x 2 1/4" (2.4 m x 102 mm x 58 mm)	
Weight: 31 lbs. per unit (14 kg)	Material: Non-absorbing polyurethane
Optional Connectors (Part# 2101) used to connect 10' (3048 mm) sections	
Optional Corners (Part# 2102) are used with Connectors to make 90° corners	
Optional Carrying Case (Part# 2104)	

To see more SpillBerms, visit our website, www.SpillContainment.com.

U.S. Patent No. 5,236,281

UltraFunnels®

Bung-Access Funnel

The Bung-Access Ultra-Funnel allows access to the 3/4" drum bung. Installation of our PopUp Fill Gauge in the 3/4" bung allows visual monitoring of waste level in the drum and helps you plan ahead for drum removal. It also eliminates the mess caused by overfilling!

Part# 0482



Unique zig-zag channeled surface diffuses splashing. Level surfaces allow filters, paint cans, buckets and bottles to remain upright while draining passively.

Burp-Free Funnel

Burp-Free Ultra-Funnels feature a built-in vent. No more splashing or "burping" when pouring liquids!

- Threaded brass insert screws into 2" drum bung.
- All polyethylene construction won't rust or corrode — provides excellent chemical resistance.
- Hinged, lockable lid prevents unauthorized access.
- New, larger style provides bigger pouring area and easy access.

Part# 0656



Part# 0651



ULTRA-BUNG ACCESS FUNNEL

Part# 0482: with spout

Part# 0484: with hinged cover, with spout

Dimensions: 23 5/8" OD x 5 1/2" (600 mm x 140 mm)

29" x 26 3/4" x 9 1/2" (737 mm x 679 mm x 241 mm) with hinged cover

Weight: 9 lbs. (4 kg)

13 lbs. (6 kg) with hinged cover

Capacity: 6 gallons (23 L)

Options: Snap-on Cover, Part# 0485 • PopUp Fill Gauge, Part# 9985

ULTRA-BURP-FREE FUNNEL

Part# 0651: Standard

Weight: 5 lbs. (2.5 kg)

Dimensions: 13 3/8" dia. x 11" H (340 mm dia. x 279 mm H)

Part# 0656: Large

Weight: 8 lbs. (3.5 kg)

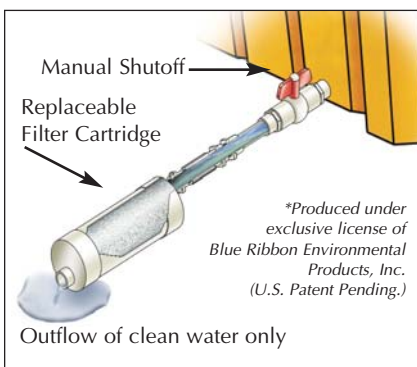
Dimensions: 22" dia. x 11 1/2" H (559 mm dia. x 292 mm H)

U.S. Patent No. 5,117,878; D,317,850

To see more Funnels, visit our website, www.SpillContainment.com.

UltraSelfBailer®

Passively Filter Hydrocarbons From Stormwater In Outdoor Containment Products



- The best protection for non-monitored containment sites.
- Helps eliminate problems associated with the collection of rainwater in outdoor containment products.
- Simple installation — can be connected to any outdoor containment product.
- Hydrocarbon "sheens" and modest spills are captured — clean stormwater drains through the outflow port.
- Larger or concentrated spills activate "auto-shutoff" mechanism.
- Manual shutoff valve can be used to secure all draining operations, change out the filter cartridge.
- Filters are quickly and easily replaced.



Use with IBC SpillPallets, Containment Berms and other outdoor containment products.

ULTRA-SELFBAILER

Part# 9935: standard	Part# 9937: large	Part# 9926: XL	Part# 9928: XXL
Dimensions: 28" L x 3 1/2" dia. (712 mm x 89 mm dia.)	Dimensions: 36" L x 4 1/2" dia. (915 mm x 115 mm dia.)	Dimensions: 39" L x 6 1/2" dia. (991 mm x 166 mm dia.)	Dimensions: 43" L x 9" dia. (1093 mm x 229 mm dia.)
Weight: 2 lbs. (1 kg)	Weight: 7 lbs. (3 kg)	Weight: 11 lbs. (5 kg)	Weight: 16 lbs. (7 kg)
Flow Rate: 7.5 gallons per hour* (29 L per hour*)	Flow Rate: 22 gallons per hour* (84 L per hour*)	Flow Rate: 42 gallons per hour* (159 L per hour*)	Flow Rate: 55 gallons per hour* (209 L per hour*)
Material: PVC	Material: PVC	Material: PVC	Material: PVC
Replacement Filter Cartridges 2-Pack Part #9936	Replacement Filter Cartridge 1-Pack Part #9938	Replacement Filter Cartridge 1-Pack Part #9927	Replacement Filter Cartridge 1-Pack Part #9929

*At 2"WC (Head Pressure)

- Helps comply with SPCC Regulations.

SPCC Regulations state that facilities with total, above-ground, oil storage capacity (not actual gallons on site) of greater than 1,320 gallons must comply.

So, what is 1,320 gallons?

It's twenty-five
55-gallon drums.



OR

It's two IBC tanks
and fifteen drums.



OR

It's one tanker
truck.



OR

It's one railroad
tanker car.



UltraTech International, Inc.
11542 Davis Creek Court
Jacksonville, FL 32256 USA
(904) 292-1611
Toll Free 1-877-ULTRATECH
(1-877-858-7283)
Fax (904) 292-1325
E-mail: info@SpillContainment.com
www.SpillContainment.com