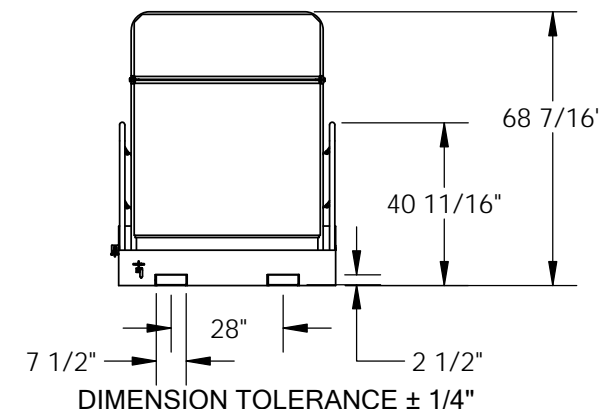
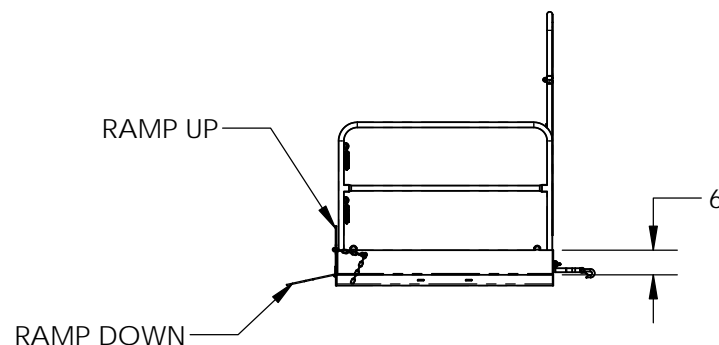
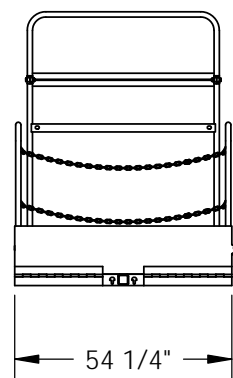
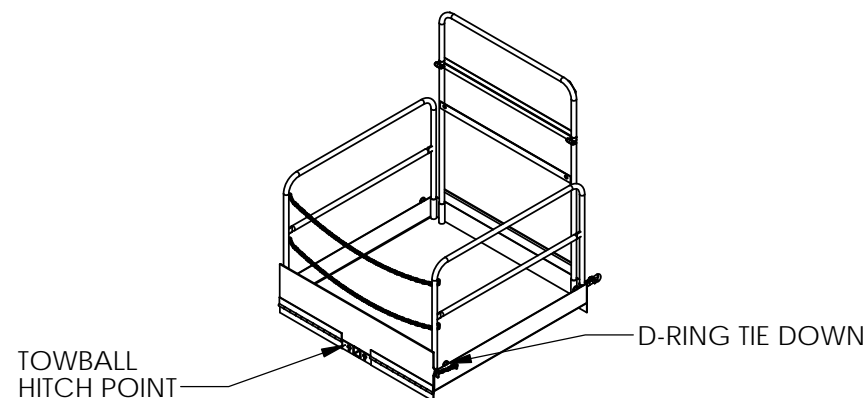
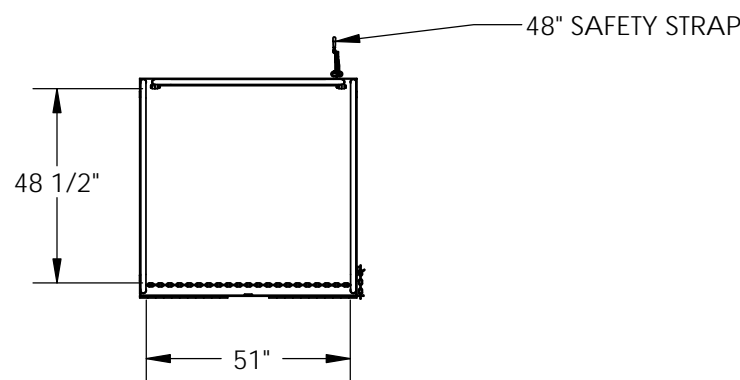


ECONOMICAL PORTABLE LOADING PLATFORM W/HANDRAIL OPTION -FTLP-5454-HR

APPROX WEIGHT: 428.31 lbs.
DOES NOT INCLUDE WEIGHT OF POWER OR PACKAGING!!!

*** ANY ADDITIONS, DELETIONS, OR OMISSIONS MUST BE CORRECTED ON THIS DRAWING AS THIS DRAWING WILL BE CONSIDERED ALL INCLUSIVE ***

ALL GRAPHICS PROVIDED ARE FOR REFERENCE ONLY. IF CERTAIN DIMENSIONS ARE CRITICAL PLEASE VERIFY THOSE DIMENSIONS WITH YOUR SALESPERSON



STANDARD FEATURES

MODEL NUMBER IS: FTLF-5454-HR
USABLE WIDTH IS: 51"
USABLE LENGTH IS: 48 1/2"
OVERALL HEIGHT IS: 68 7/16"
SIDE GUARD HEIGHT IS: 6"
MAX CAPACITY IS 2,000 LBS WITH TA UNIFORM LOAD
(DEPENDENT ON FORK TRUCK CAPACITY)
FORK POCKETS ARE 7-1/2" WIDE X 2-1/2" HIGH USABLE
(WITH 28" CENTERS)
4 TIE DOWN RINGS INCLUDED - LOCATED ON CORNERS
48" SAFETY STRAP TO SECURE PLATFORM TO FORK TRUCK (INCLUDED)

SPECIAL FEATURES

NONE

NEVER EXCEED LOAD CENTER RATING PER FORK TRUCK
MANUFACTURER'S GUIDELINES.
DO NOT USE THIS FORK TRUCK ATTACHMENT IF LOAD WILL
EXCEED FORK TRUCK MANUFACTURER'S LOAD
CENTER RATING.

FOR INTERNAL USE ONLY PROJECT SIGN OFF	
SALES	
ENG.	
FAB.	
POWER	

APPROVAL

I, THE UNDERSIGNED, AGREE THAT THE PRODUCT AS
REPRESENTED SATISFIES DESIGN AND DIMENSION
REQUIREMENTS. I ALSO ACKNOWLEDGE MY DUTY TO
CONFIRM PRODUCT AND INSTALLATION
COMPLIANCE WITH ALL APPLICABLE FEDERAL, STATE
AND LOCAL REGULATIONS AND STANDARDS.
ALL SPECIAL UNITS ARE NON-RETURNABLE
[] As drawn [] As marked

Signed: _____ Date: _____

LEAD TIME WILL START UPON RECEIPT
OF SIGNED APPROVAL DRAWING

DISTRIBUTOR'S NAME:		P.O.#
VESTIL MANUFACTURING		X
DRAWN BY: BCN		W.O.#
DATE: 1/14/2016		X
REFERENCE: X		SALES: X
QUOTED LEAD TIME: X		FILE NAME:
QUOTE # X		14-007-098