

**SR-SS HORIZONTAL MATERIAL RACK**  
**Assembly Instructions**

9/25/2007

**PARTS DESCRIPTION**

Upright - 4 pcs.

Floor mounts - 2 pcs.

Cross bars - 4 pcs.

Arms - 36 3/4" long (2 pcs.), 33 3/4" long (2 pcs.), 32 3/8" long (2 pcs.), 28 1/4" long (2 pcs.), 25 1/4" long (2 pcs.),  
22 3/4" long (2 pcs.), 19 3/4" long (2 pcs.).

Hardware kit - M10-1.5x60mm long bolt (6 pcs.), M10-1.5 nylock nut (6 pcs.), M6-1.00x35mm long screw (2 pcs.),  
M6-1.00x20mm long bolt (8 pcs.), M6-1.00 nylock nut (10 pcs.), Yellow end caps (28 pcs.)

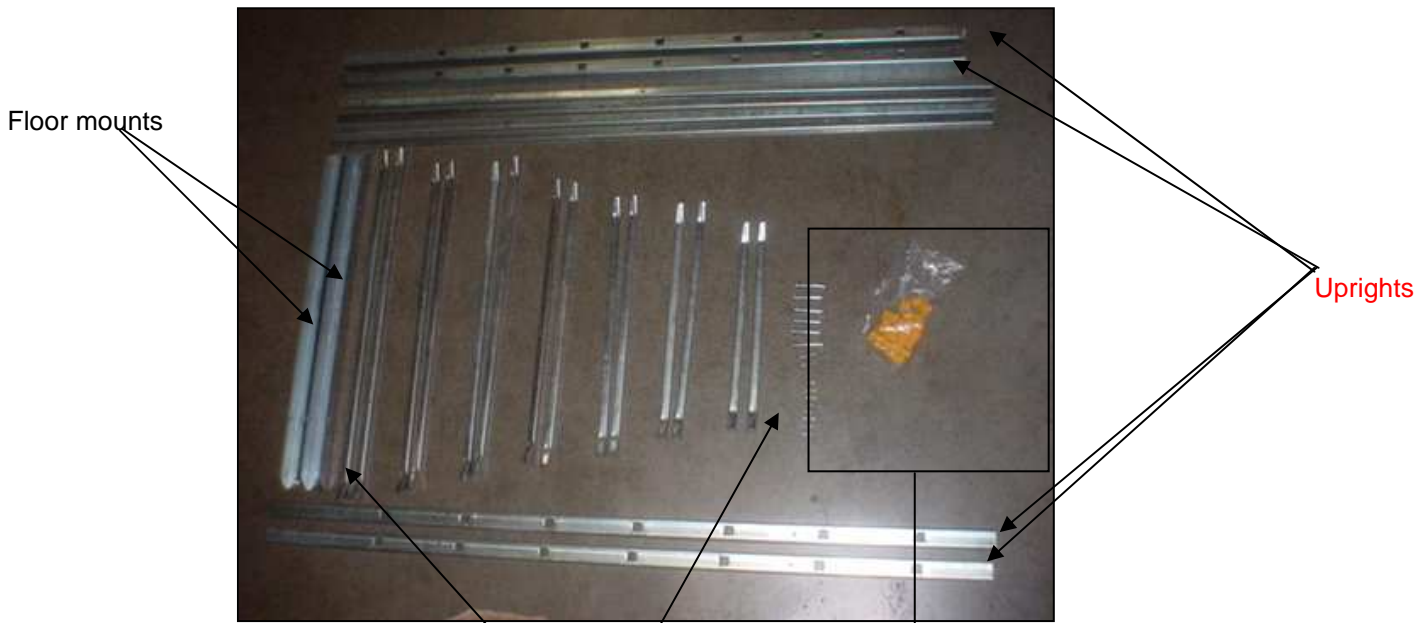


Fig.1

Arms

Hardware kit



Fig.2

**STEP 1:**

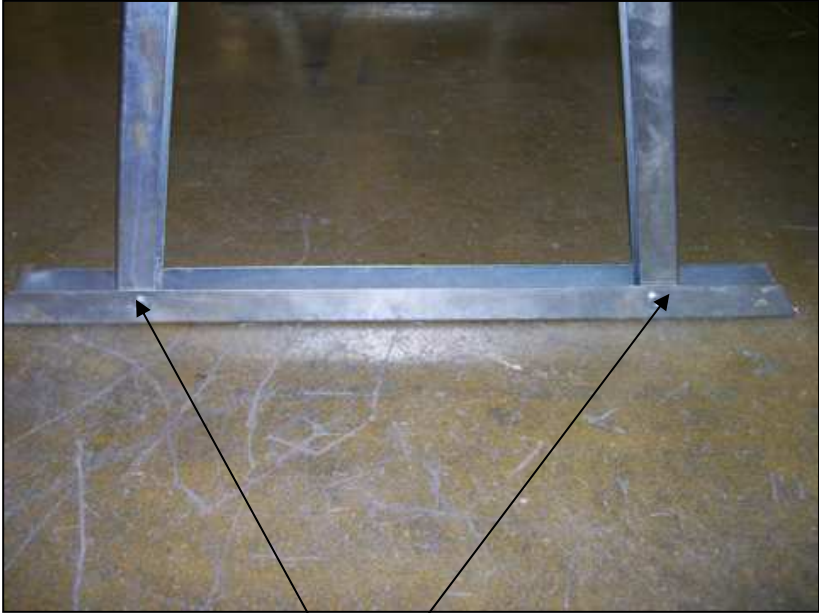


Fig.3

Use 3 M10x1.5x60mm long bolts and 3 M10x1.5 lock nuts to bolt one side of upright at the base and top.



Fig.4

**STEP 2:**

Use 8 M6-1.00x20mm long bolst, & 8 M6-1.00 lock nuts to secure 4 cross bars



Fig.5

**STEP 3:**

Use 2 M6x1.00x35mm long screws, & 2 M6-1.00 lock nuts to secure center of cross bars on both sides.



Fig.6



Fig.7

**STEP 4:**

Insert load arms in the uprights as shown below in Fig. 8 & 9, and install end caps



Fig.8