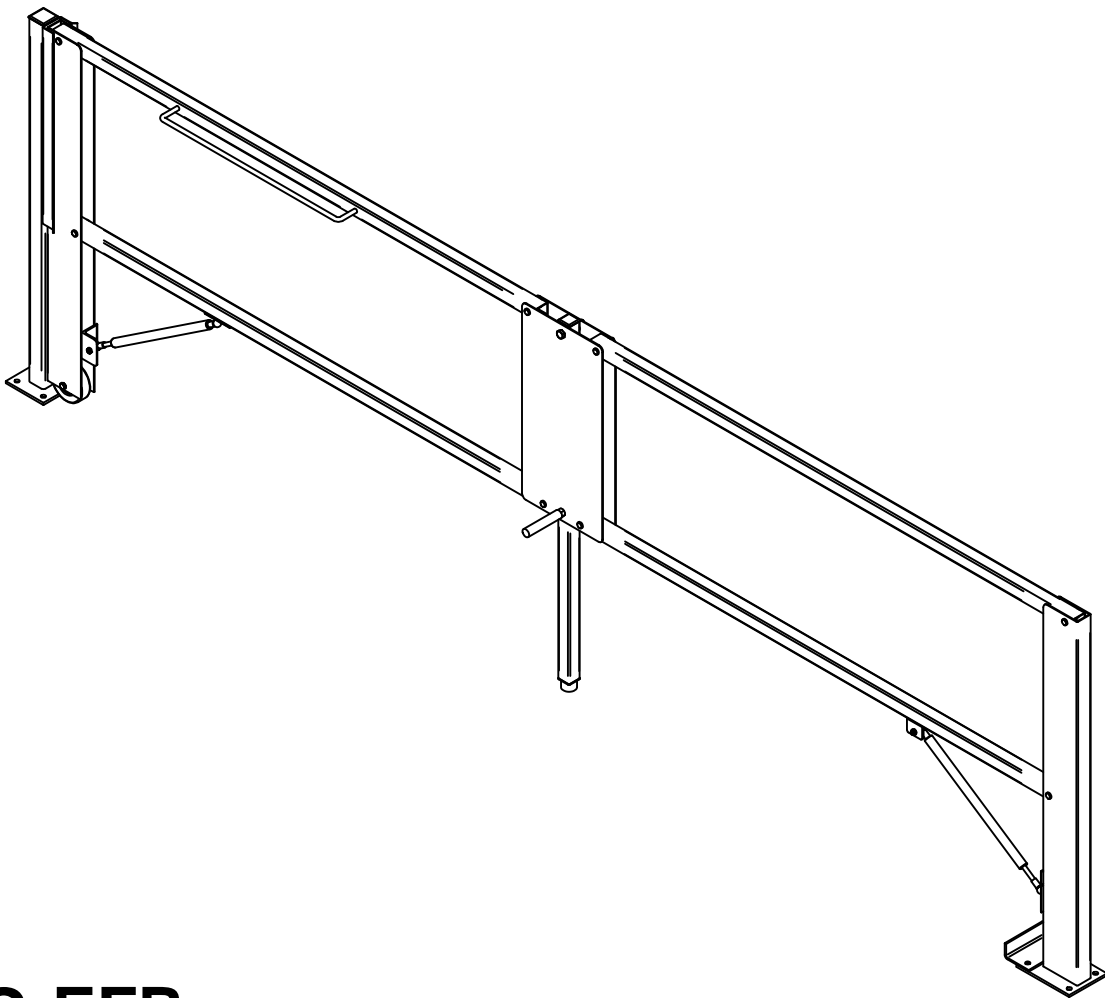




EdgeGard™ Dock Gate, Folding-Rail

Installation Instructions



WG-EFR
(SP0103)

Table of Contents

General Specifications	1
Product Description	2
Installation Procedure	3
Component Parts	9
Warranty	10

Thank you

We know that in today's competitive marketplace, customers have many choices when purchasing safety products. We appreciate your choosing Wildeck's high quality EdgeGard™ dock gate and know you have made a wise decision.

Our continued reputation as one of the top manufacturers of industrial products rests with the satisfaction of each and every customer. Wildeck products are *Crafted with Confidence* by employee owners in Waukesha, Wisconsin, USA. Should you have any questions or require installation assistance, please do not hesitate to contact your local Wildeck representative or Wildeck's customer service department at 1-800-325-6939.

Thank you for allowing Wildeck to serve your needs.

General Specifications

Features and Benefits:

- ▶ EdgeGard™ Gate top rails are 42" high (above floor Level) when closed.
- ▶ Requires minimal floor space and is easily assembled and installed.
- ▶ Strong balanced construction withstands 200 lbs. top rail pressure. Meets OSHA 1910.23 load force protection requirement.
- ▶ Counterbalanced gas cylinder(s) allow easy lifting and safe gate operation.
- ▶ Black safety stripe on bright yellow paint finish ensures high visibility.
- ▶ Quality Wildeck® gates are manufactured in the USA and provide a lone service life.

Specifications:

- ▶ Weight:

Straight-Rail Gate	71 lbs (8 ft.) 77 lbs (10 ft.)
Folding-Rail Gate	110 lbs (10 ft.) 116 lbs (12 ft.)
- ▶ Installation Footprint:
(overall width and height clearance when raised)

Straight-Rail Gate	110"W x 143"H (8 ft.) 134"W x 167"H (10 ft.)
Folding-Rail Gate	141"W x 104"H (10 ft.) 165"W x 116"H (12 ft.)

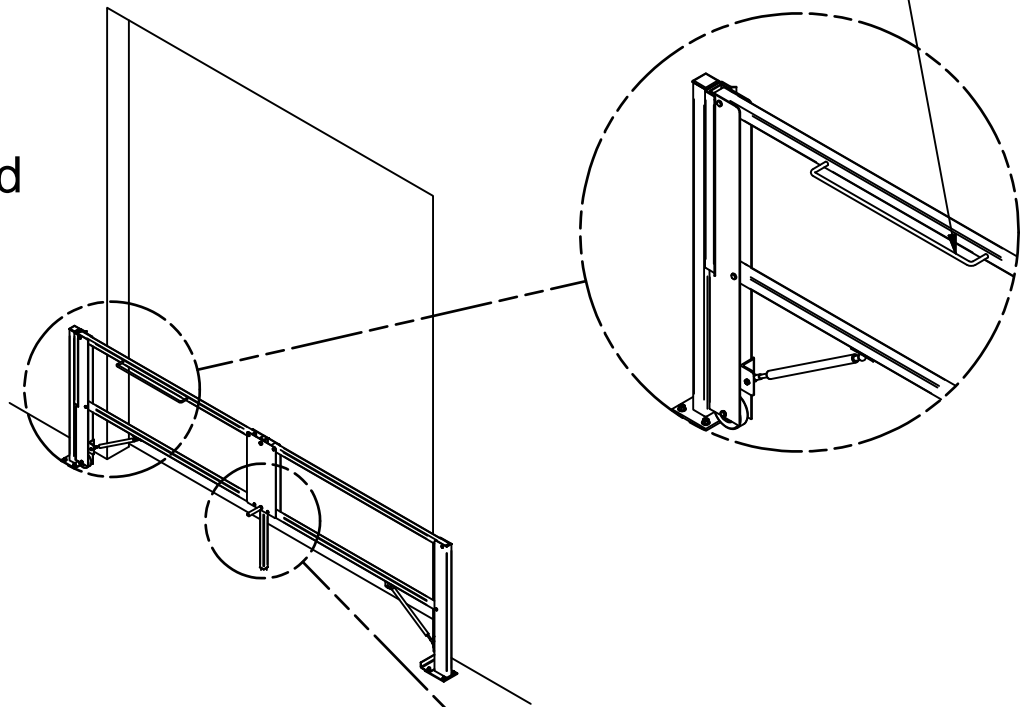
NOTE: The gate sizes listed above are Wildeck's standard product, other gate sizes available on request.

Product Description

The Folding-Rail EdgeGard™ Dock Gate is a personnel barrier, protecting the open edge of a dock door, truck loading pit, or other hazardous area. The gate can be installed so that the gate slides open from right-to-left or from left-to-right. Below depicts the gate opening from left-to-right.

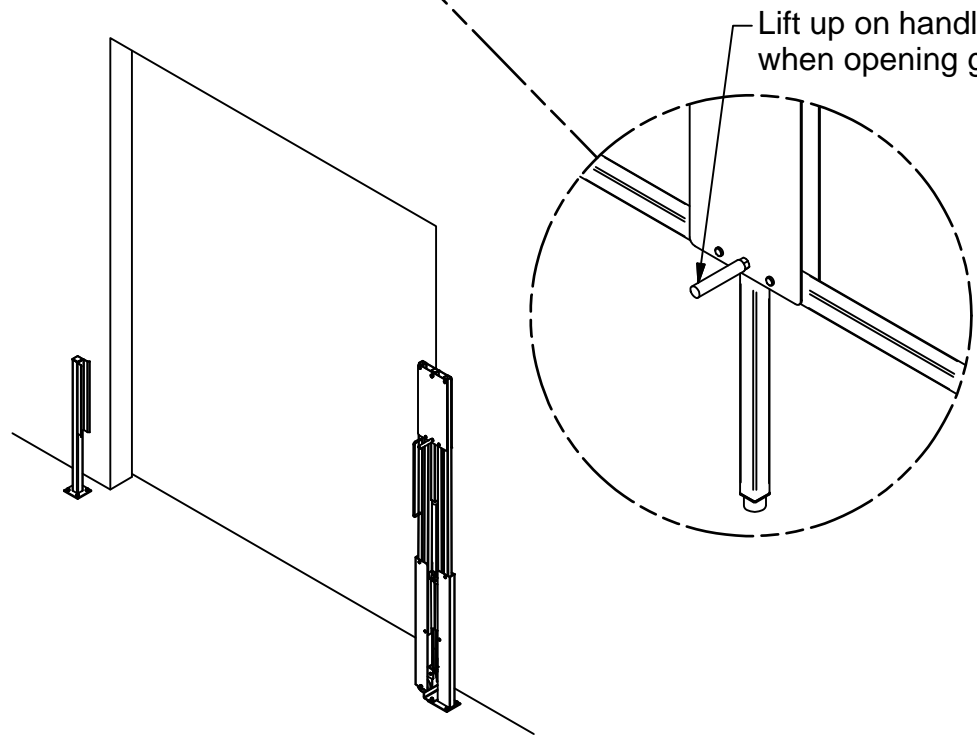
Gate Closed

Slide gate open or closed using handle on top rail



Gate Open

Lift up on handle grip when opening gate



Installation Procedure

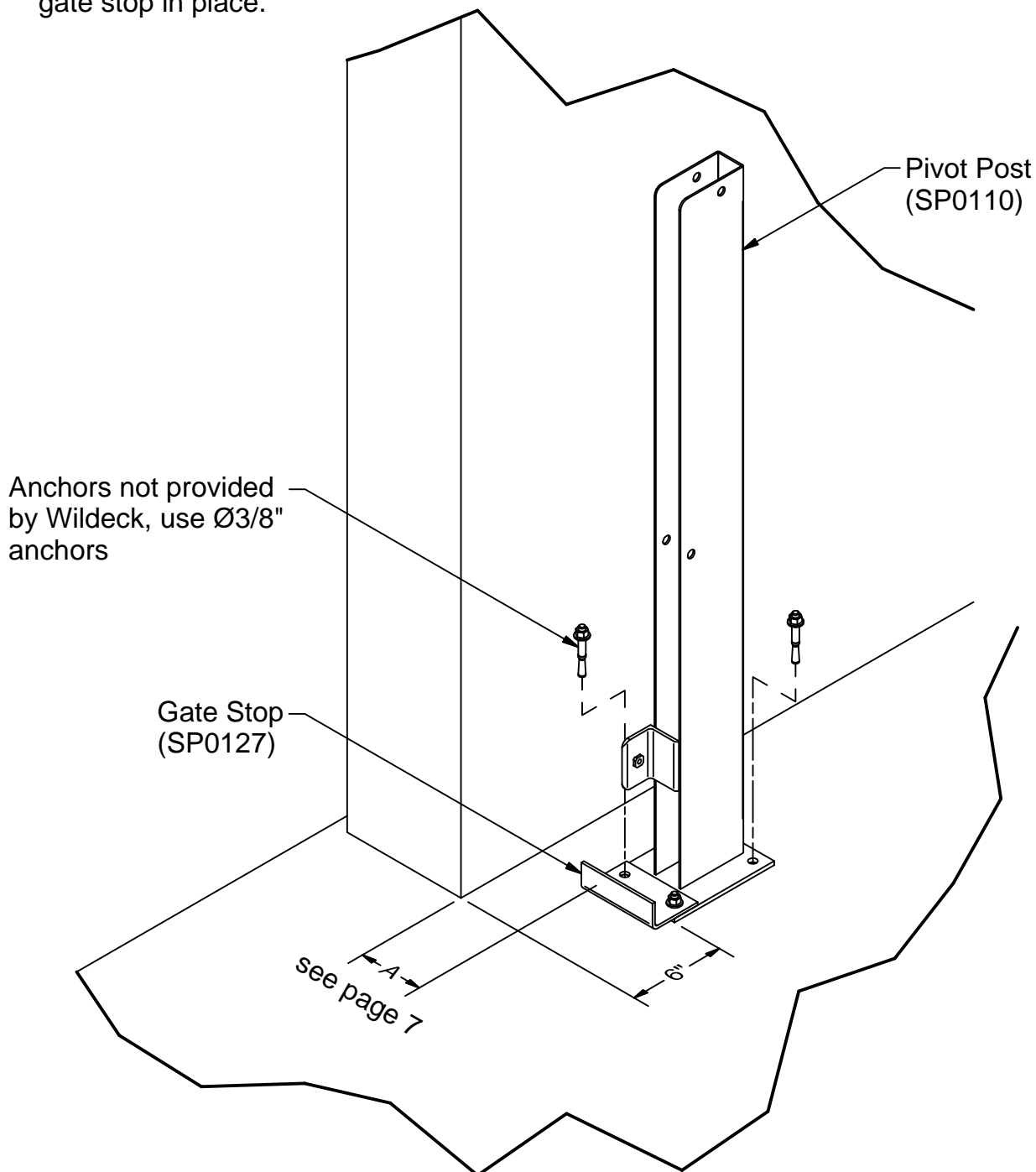
It is recommended to start installation of gate from the pivot post and work towards the receiver post. The gas springs to be the last items assembled onto the gate.

1. Position pivot post in desired location. Before anchoring to floor, place gate stop on top of base plate aligned with holes along inside edge of base plate, as shown. Utilize anchors to secure gate stop in place.

NOTES:

Dimension A to match on page 7.

Refer to the assembly drawing # SP0103 at the end of these instructions to aid in assembly of the gate.



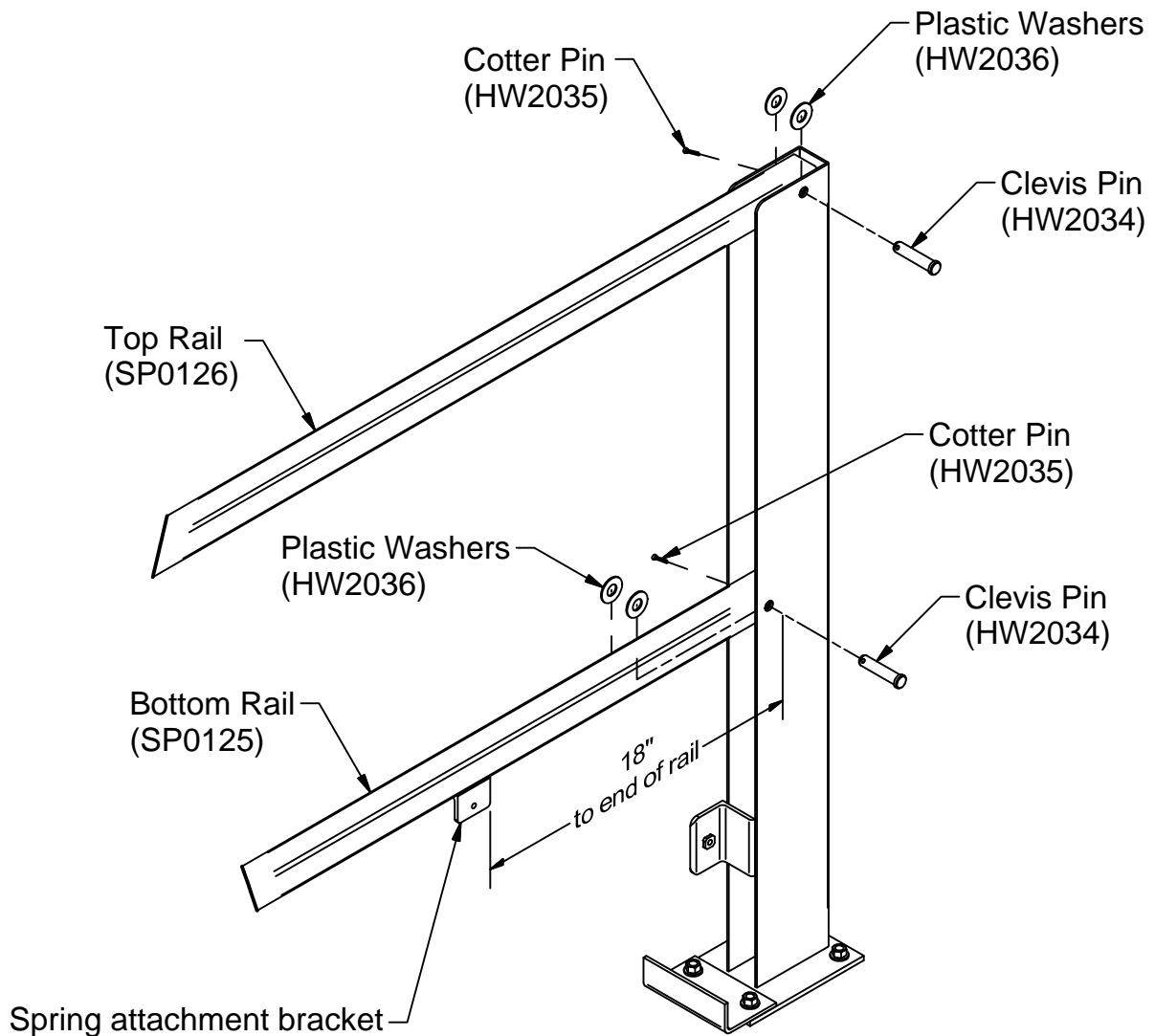
Installation Procedure

- Slide top and bottom rails into pivot post and secure with clevis pins. Plastic washers are used between the rails and the post (both sides of tubes).

NOTES:

The bottom rail with spring attachment bracket must be oriented as shown below.

Make sure that the top rail closest to the pivot post does not have a handle. The top rail with handle is assembled to the rolling pivot post at the opposite end of gate, see following steps.

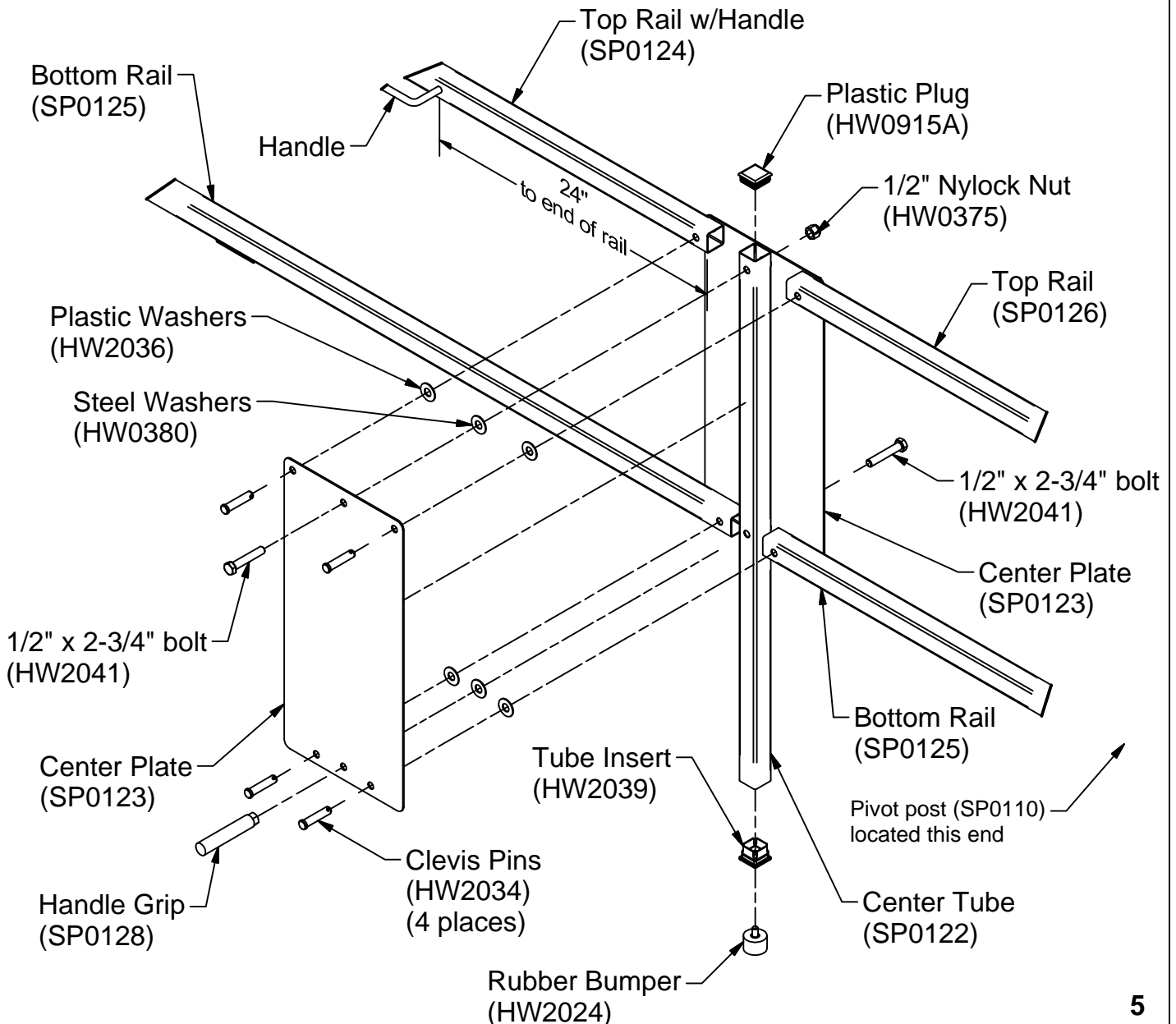


Installation Procedure

3. Install tube insert into bottom of center tube and then thread on rubber bumper. Cap other end of tube with plastic plug. Note orientation of the holes in the center tube.
4. Attach center plates to center tube. Secure the top of the plates to the tube with 1/2" bolt, washers & nut and secure the bottom of the plates with bolt, washers and handle grip. Steel washers are used between the center tube and the center plates (both sides of tube).

5. Attach top and bottom rails to the center plate assembly secured with clevis pins. Plastic washers are used between the rails and the center plates (both sides of tubes).

NOTE: The orientation of the spring attachment brackets on the bottom rails are mirror images of each other.
The top rail with handle must be oriented as shown below.



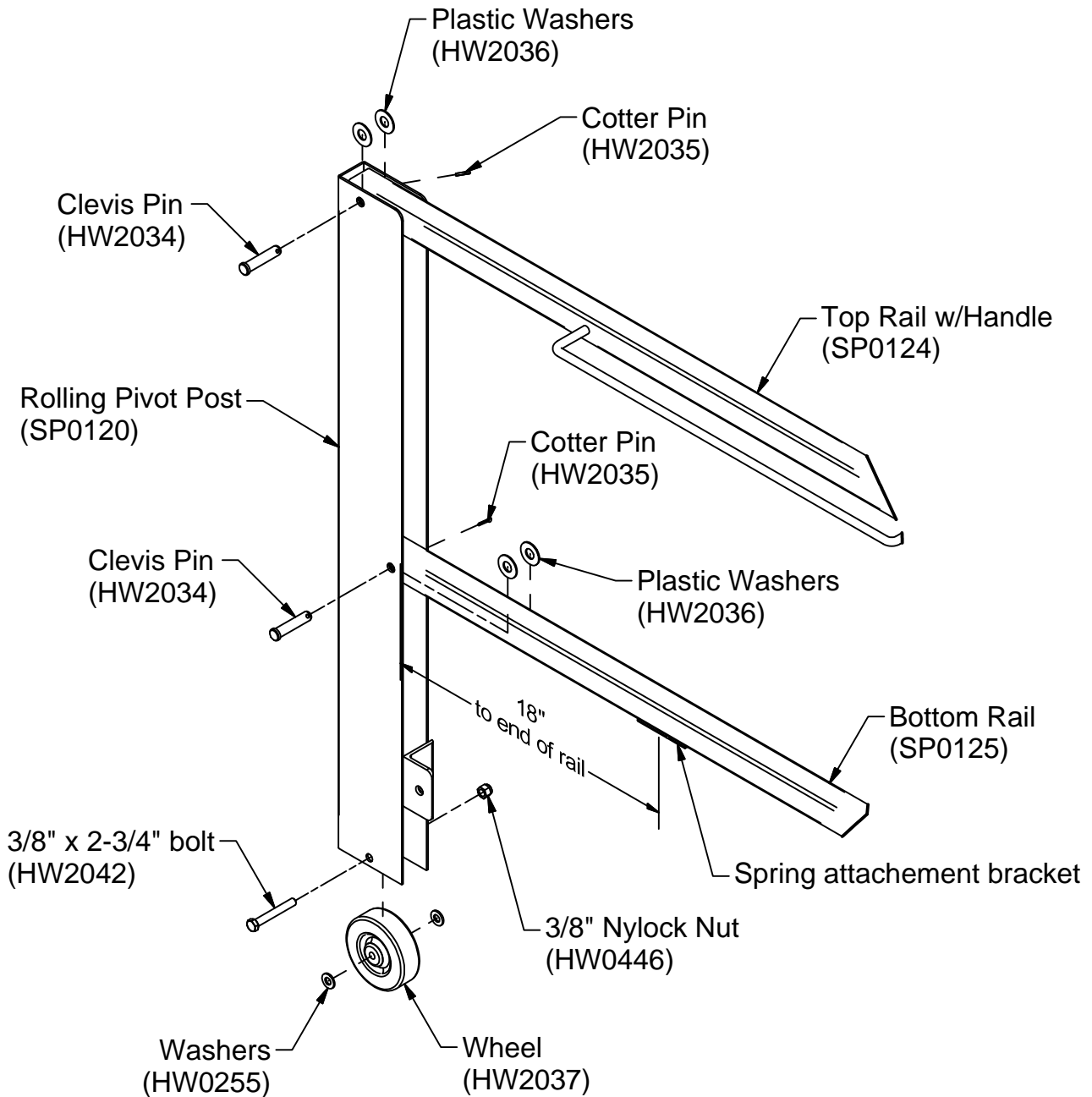
Installation Procedure

6. Assemble wheel onto rolling pivot post with 3/8" bolt, washers and nut.

NOTE: It may be advantageous to have a second person help with the following.

7. Slide top and bottom rails into post and secure with clevis pins. Plastic washers are used between the rails and the post (both sides of tubes).

NOTE: The bottom rail with spring attachment bracket must be oriented as shown below. It should be a mirror image of the bottom rail at the other end.



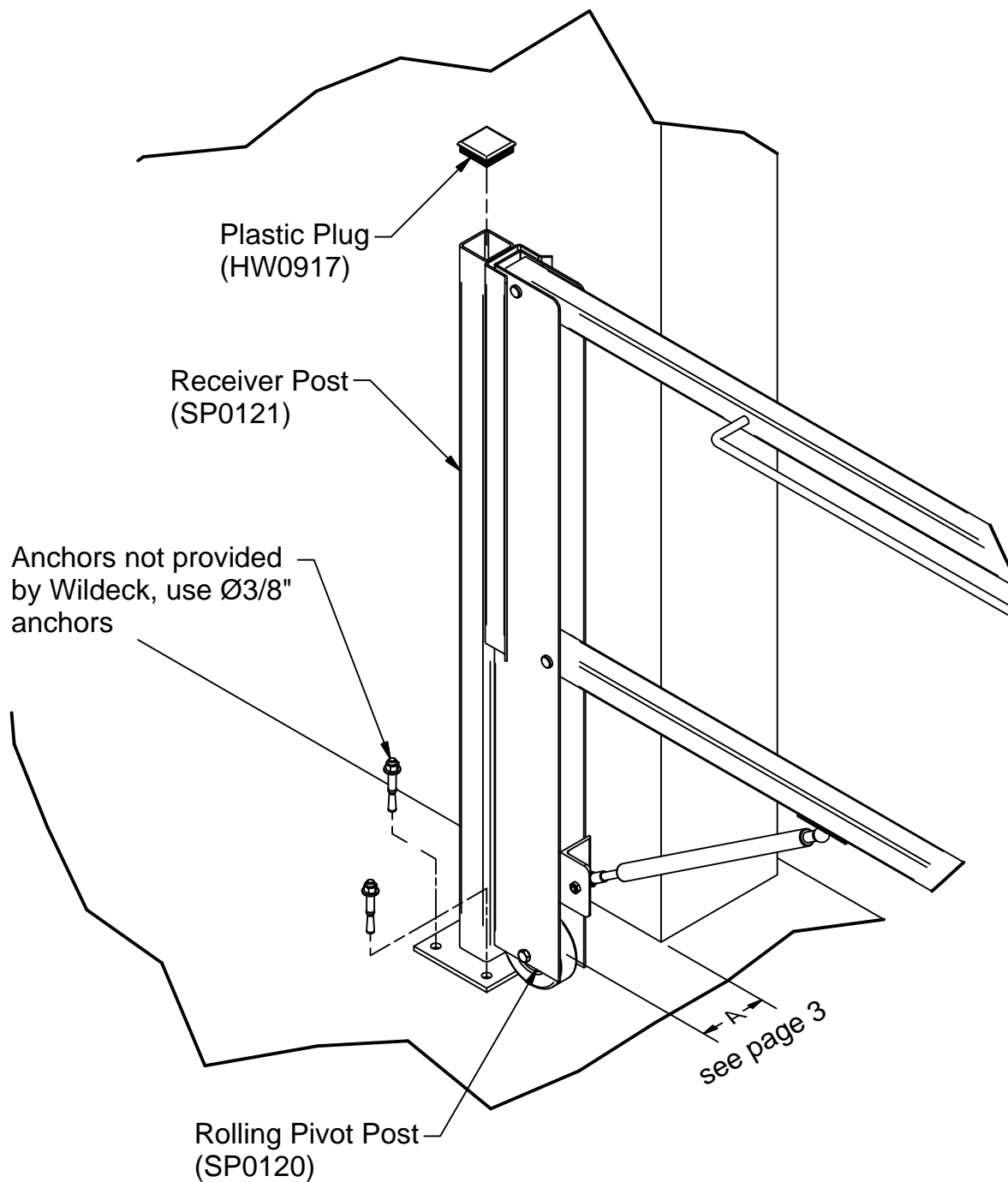
Installation Procedure

8. Place gate into its fully closed position.

10. Cap receiver post with plastic plug.

9. Position receiver post next to rolling pivot post and anchor to floor.

NOTE: Before anchoring receiver post, double check that the base plate is aligned with the pivot post base plate, Dimension A.



Installation Procedure

NOTE: It may be advantageous to have a second person help with the following steps.

11. Attach ball studs to spring attachment brackets on both the bottom rails and the pivot posts (4 places). Secure the studs with jam nuts.

NOTE: The ball studs must be oriented in opposite directions, as shown.

12. Thread ball sockets onto gas springs.
13. Remove clips from the ball sockets.
14. Slide the gate open until it's approx. 6" from fully open to allow room to install springs.

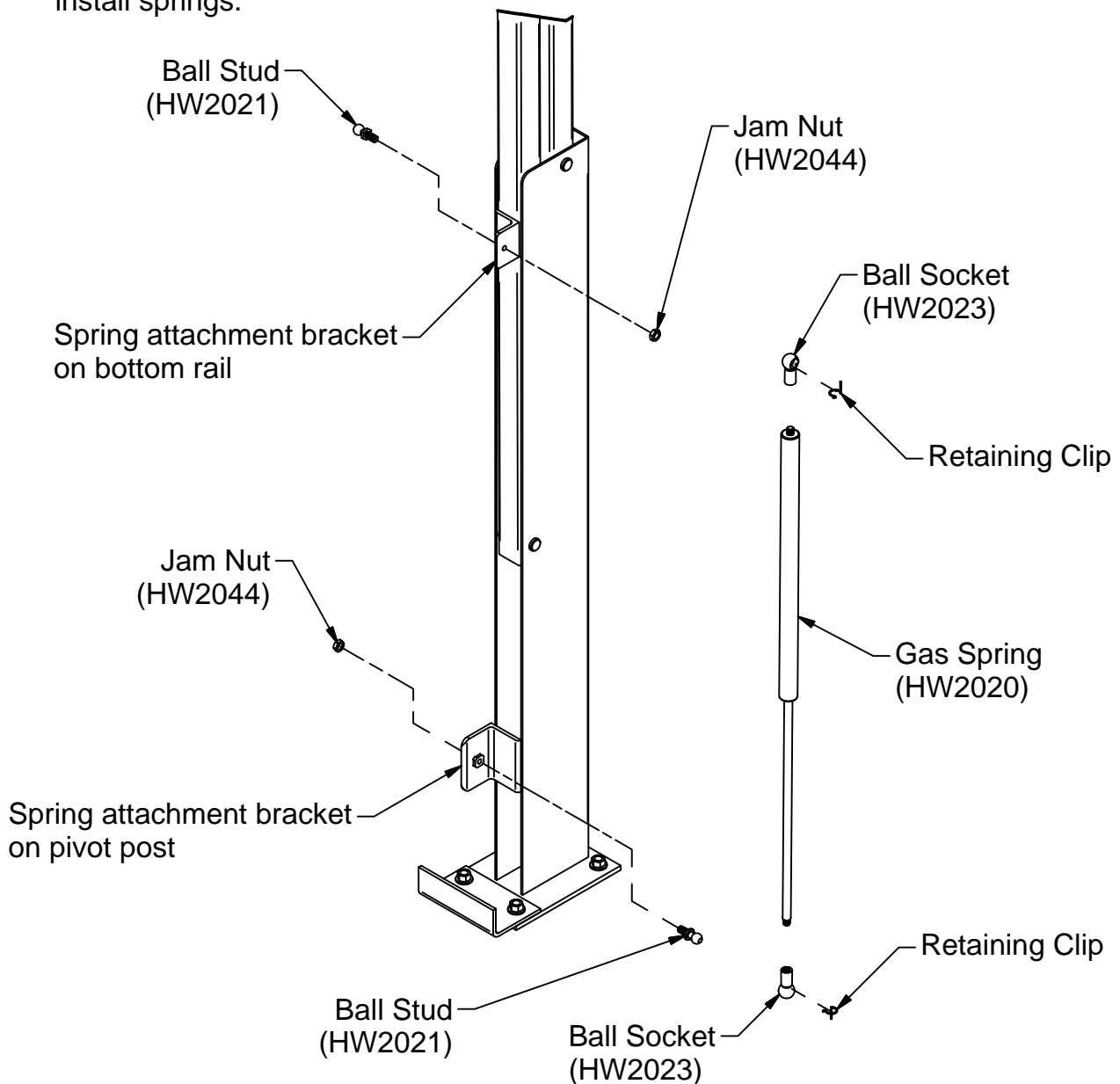
15. Attach springs to ball studs with the rod pointing down as shown.

16. Secure ball sockets onto studs with the retaining clips.

17. After the springs are attached, double check that the springs are centered vertically with the post, adjust accordingly.

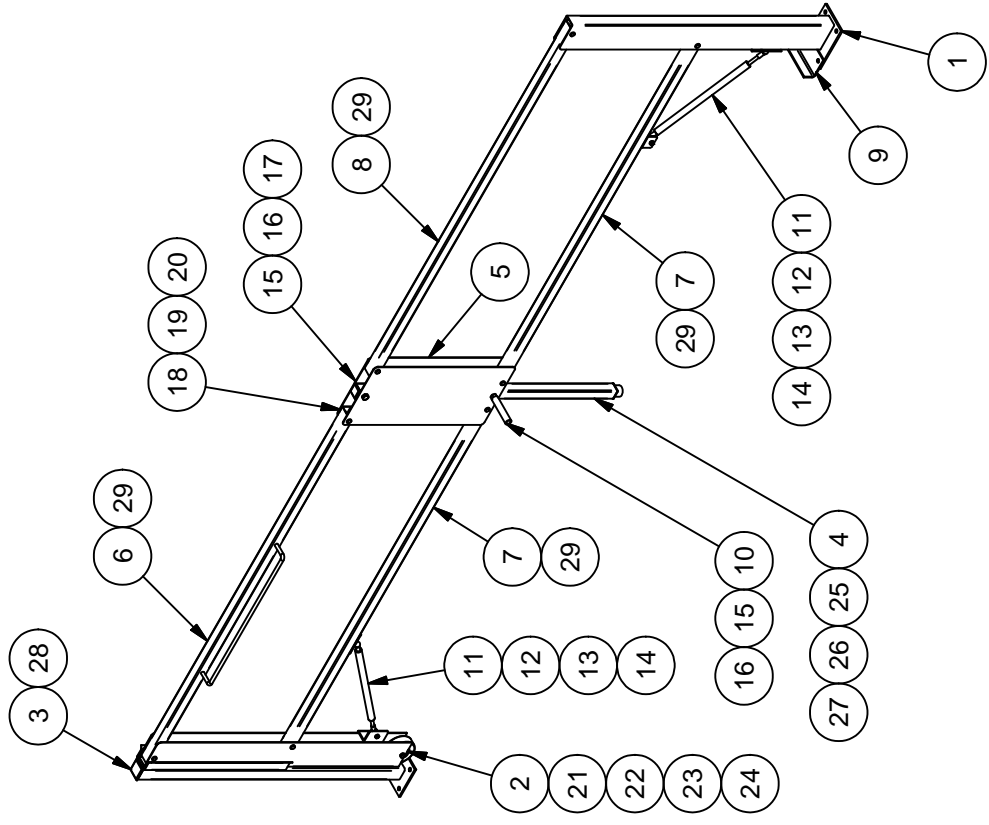
18. Close and open gate to make sure nothing binds, fix accordingly.


19. Apply striped tape to rails as desired.



BILL OF MATERIALS

ITEM	QTY	DESCRIPTION	PART #
1	1	PIVOT POST, STATIONARY	SP0110
2	1	ROLLING PIVOT POST	SP0120
3	1	RECEIVER POST	SP0121
4	1	TUBE, CENTER POST	SP0122
5	2	CENTER PLATE	SP0123
6	1	TOP RAIL w/HANDLE	SP0124
7	2	BOTTOM RAIL	SP0125
8	1	TOP RAIL TUBE	SP0126
9	1	GATE STOP	SP0127
10	1	HANDLE WITH GRIP	SP0128
11	2	GAS SPRING w/THREADED ENDS	HW2020
12	4	BALL SOCKET	HW2023
13	4	BALL STUD	HW2021
14	4	JAM NUT, 5/16-18 UNC	HW2044
15	2	HHCS, 1/2-13 x 2 3/4"	HW2041
16	4	FLAT WASHER, 1/2"	HW0380
17	1	NYLOCK, 1/2-13 UNC	HW0375
18	8	CLEVIS PIN, 1/2" DIA. x 2 1/4" LENGTH	HW2034
19	16	PLASTIC WASHER, 1/2" ID x 1 1/4" OD	HW2036
20	8	COTTER PIN, 1/8"	HW2035
21	1	RUBBER WHEEL, 4" DIA.	HW2037
22	1	HHCS, 3/8-16 x 2 3/4"	HW2042
23	2	FLAT WASHER, 3/8"	HW0255
24	1	NYLOCK, 3/8-16 UNC	HW0446
25	1	TUBE INSERT	HW2039
26	1	RUBBER BUMPER w/ STUD	HW2024
27	1	PLASTIC CAP FOR 1-1/2" SQ. TUBE	HW0915A
28	1	PLASTIC CAP FOR 2" SQ. TUBE	HW0917
29	1	STRIPED TAPE, YELLOW/BLACK	HW2038



DRN BY: BRT	DATE: 3/27/2009		SP0103	JOB #:
REV:	REV DATE:			QTY:



EdgeGard™ Dock Gates

WARRANTY

Wildeck EdgeGard™ Dock Gates are warranted to be free of material defects and workmanship for a period of one (1) year. When properly anchored, EdgeGard™ Dock Gates are also warranted to meet the 200 lb. OSHA 1910.23 load force protection requirement.

The warranty begins at time of shipment from Wildeck's factory. Labor to install, adjust, maintain or replace the warranted gate, or any component part, is not included.

This warranty is valid only if the Wildeck EdgeGard™ Dock Gate has been installed in complete accordance with Wildeck's Installation Instructions. Improperities including but not limited to abuse, negligence, or failure to install, maintain or adjust the equipment properly, will void the warranty.

The warranty is also voided if unauthorized parts, hardware or equipment are installed, or modifications are made to the Wildeck EdgeGard™ Dock Gate without prior written authorization. Wildeck reserves the right to change, at any time, the material, design or specifications of its products without obligation to subsequent purchases, or add improvements without making corresponding changes to products previously manufactured.

WILDECK SHALL NOT IN ANY EVENT BE LIABLE FOR ANY DAMAGES, WHETHER BASED ON CONTRACT, WARRANTY, NEGLIGENCE, STRICT LIABILITY OR OTHERWISE, INCLUDING WITHOUT LIMITATION ANY CONSEQUENTIAL, INCIDENTAL OR SPECIAL DAMAGES, ARISING WITH RESPECT TO THE EQUIPMENT OR ITS FAILURE TO OPERATE, EVEN IF WILDECK HAS BEEN ADVISED OF THE POSSIBILITY THEREOF.

WILDECK MAKES NO OTHER WARRANTY OR REPRESENTATION OF ANY KIND, EXCEPT THAT OF TITLE, AND ALL OTHER WARRANTIES, EXPRESSED OR IMPLIED, INCLUDING WARRANTIES OR MERCHANTABILITY AND FITNESS FOR A PARTICULAR PURPOSE, ARE HEREBY EXPRESSLY DISCLAIMED.

Order No. _____



P.O. Box 89 • 405 Commerce Street
Waukesha, WI USA 53186
262-549-4000 • 800-325-6939
FAX 262-549-3466 • info@wildeck.com
www.wildeck.com